

TECHNICAL MANUAL

**ORGANIZATIONAL, DIRECT SUPPORT, AND GENERAL SUPPORT
MAINTENANCE REPAIR PARTS AND SPECIAL TOOLS LIST
(INCLUDING DEPOT MAINTENANCE REPAIR
PARTS AND SPECIAL TOOLS)**

FOR

**AIR CONDITIONER, VERTICAL COMPACT, 18,000
BTU/HR, 208 VOLTS, 3-PHASE, 50/60 HZ
(MODEL 18KV-208-3-60)
NSN 4120-01-089-4053**

HEADQUARTERS, DEPARTMENT OF THE ARMY

25 SEPTEMBER 1981

CHANGE

NO. 2

HEADQUARTERS
DEPARTMENT OF THE ARMY
WASHINGTON, D.C., 9 NOVEMBER 1992

Organizational, Direct Support, and General Support
Maintenance Repair Parts and Special Tools List
(Including Depot Maintenance Repair
Parts and Special Tools)

**AIR CONDITIONER, VERTICAL COMPACT,
18,000 BTU/HR, 208 VOLTS, 3-PHASE, 50/60 HZ
(MODEL 18 KV-208-3-60)
NSN 4120-01-089-4053**

Approved for public release; Distribution is unlimited

TM 5-4120-356-24P, 25 September 1981 is changed as follows:

1. Remove and insert pages as indicated below. New or changed text material is indicated by a vertical bar in the margin. An illustration change is indicated by a miniature pointing hand.

Remove pages

6
7 and 8
53 through 58

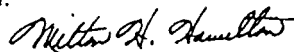
Insert pages

6
7 and 8
53 through 58

2. Retain this sheet in front of manual for reference purposes.

By Order of the Secretary of the Army:

Official:



MILTON H. HAMILTON
*Administrative Assistant to the
Secretary of the Army*
02897

GORDON R. SULLIVAN
*General, United States Army
Chief of Staff*

DISTRIBUTION:

To be distributed in accordance with DA Form 12-34, block no. 0176, requirements for
TM 5-4120-356-24P.

CHANGE }
NO. 1 }

HEADQUARTERS
DEPARTMENT OF THE ARMY
WASHINGTON, D.C., 26 March 1981

Organizational, Direct Support, and General Support
Maintenance Repair Parts and Special Tools List
(Including Depot Maintenance Repair
Parts and Special Tools)

For

AIR CONDITIONER, VERTICAL COMPACT, 18,000
BTU/HR, 208 VOLTS, 3-PHASE, 50/60 HZ
(MODEL 18KV-208-3-60)
NSN 4120-01-089-4053

TM 5-4120-356-24P, 25 September 1981, is changed as follows:

1. Remove and insert pages as indicated below. New or changed text material is indicated by a vertical bar in the margin. An illustration change is indicated by a miniature pointing hand.

Remove pages

43 and 44

Insert pages

43 and 44

2. Retain this sheet in front of manual for reference purposes.

By Order of the Secretary of the Army:

Official:

R. L. DILWORTH
Brigadier General, United States Army
The Adjutant General

JOHN A. WICKHAM, JR.
General, United States Army
Chief of Staff

DISTRIBUTION:

To be distributed in accordance with DA Form 12-25A, Organizational, Direct Support and General Support Maintenance requirements for Air Conditioner, Vertical Compact, 18,000 BTU, 208V, 50/60HZ, 3PH (18KV-208-3-60)

TECHNICAL MANUAL

TM 5-4120-356-24P

HEADQUARTERS
DEPARTMENT OF THE ARMY
WASHINGTON, D. C., 25 September 1981

Organizational, Direct Support and General Support
Maintenance Repair Parts and Special Tools List
(Including Depot Maintenance Repair Parts and Special Tools)

FOR

AIR CONDITIONER, VERTICAL COMPACT
18,000 BTU/HR, 208 VOLTS, 3-PHASE
50/60 HZ
MODEL 18KV-208-3-60
NSN 4120.01-089-4053

REPORTING ERRORS AND RECOMMENDING IMPROVEMENTS

You can help improve this manual. If you find any mistake or if you know of a way to improve the procedures, please let us know. Mail your letter, DA Form 2028 (Recommended Changes to Publications and Blank Forms), or DA Form 2028-2, located in the back of this manual direct to: Commander, U.S. Army Troop Support & Aviation Materiel Readiness Command, ATTN: DRSTS-MTT, 4300 Goodfellow Boulevard, St. Louis, MO 63120. A reply will be furnished directly to you.

TABLE OF CONTENTS

		Page	Illus Figure
Section	I. INTRODUCTION	1	
Section	II. REPAIR PARTS LIST	7	
Group	01 Casing and Related Parts	7	1
	Panels, Covers and Grilles	9	2
	Data Plates and Grilles	13	3
Group	02 Control Box and Junction Box	17	4
	Wiring Harness, Control Panel	19	5
	Junction Box Assembly	21	6
	Wiring Harness, Junction Box, Three Phase	25	7
	Wiring Harness, Power Input Junction Box, Three Phase	27	8
Group	03 Compressor Assembly	29	9
Group	04 Pressure Switch	31	10
Group	05 Refrigerant Components	33	11
	Refrigerant Components	37	12
Group	06 Heater Assembly	41	13
Group	07 Fans and Motor	43	14
Group	08 Wiring Harnesses	45	15
	Wiring Harness, Three Phase	47	16
	Wiring Harness, Power Input, Three Phase	49	17
Group	09 Frame and Casing	51	18
Group	10 Bulk Materials	52	
Section	III. SPECIAL TOOLS LIST (Not Applicable)		
Section	IV. NSN AND PART NO. INDEX	53	

Section I. INTRODUCTION.

1. Scope.

This manual lists repair parts, special tools, test, measurements, and diagnostic equipment (TMDE), and other support equipment required for operation and performance of Organizational, Direct and General Support Maintenance of Air Conditioner, Vertical Compact, 18,000 BTU/HR, 208 Volts, 3-Phase, 50/60 Hz.

2. General.

a. Section II - Repair Parts List. A list of repair parts authorized for use in the performance of maintenance. The list also includes parts which must be removed for replacement of the authorized parts. Parts lists are composed of functional groups in ascending numerical sequence, with the parts in each group listed in NSN sequence, as the last group in Section II.

b. Section III - Special Tools List. Not applicable.

c. Section IV - National Stock Number and Part Number Index. A list, in National item identification number (NIIN) sequence of all National Stock Numbers (NSN) appearing in the listings, followed by a list, in alphanumeric sequence, of all part numbers appearing in the listings. National stock numbers and part numbers are cross-referenced to each illustration figure and item number appearance.

3. Explanation of Columns.

The following provides an explanation of columns found in the tabular listings.

a. Illustration. This column is divided as follows:

(1) Figure Number. Indicates the figure number of the illustration in which the item is shown.

(2) Item Number. The number used to identify each item called out in the illustration.

b. Source, Maintenance and Recoverability Codes (SMR).

(1) Source Code. Source codes are assigned to support items to indicate the manner of acquiring support items for maintenance, repair or overhaul of end item. Source codes are entered in the first and second positions of the Uniform SMR Code format as follows:

Code	Definition
PA	Item procured and stocked for anticipated or known usage.
PB	Item procured and stocked for insurance purpose because essentiality dictates that a minimum quantity be available in the supply system.
PC	Item procured and stocked and which otherwise would be coded PA except that it is deteriorative in nature.
PD	Support item, excluding support equipment, procured for initial issue or outfitting and stocked only for subsequent or additional initial issues or outfitting. Not subject to automatic replenishment.
PE	Support equipment procured and stocked for initial issue or outfitting to specified maintenance repair activities.
PF	Support equipment which will not be stocked but which will be centrally procured on demand.
PG	Item procured and stocked to provide for sustained support for the life of the equipment. It is applied to an item peculiar to the equipment which, because of the probable discontinuance or shutdown of production facilities, would prove uneconomical to reproduce at a later time.
KD	An item of a depot overhaul/repair kit and not purchased separately. Depot kit defined as a kit that provides items required at the time of overhaul or repair.
KF	An item of a maintenance kit and not purchased separately. Maintenance kit defined as a kit that provides an item that can be replaced at organizational or intermediate levels of maintenance.
KB	Item included in both a depot overhaul/repair kit and a maintenance kit.
MO	Item to be manufactured or fabricated at organizational level.
MF	Item to be manufactured or fabricated at the direct support maintenance level.

- MB Item to be manufactured or fabricated at the general support maintenance level.
- MD Item to be manufactured or fabricated at the depot maintenance level.
- AO Item to be assembled at organizational level.
- AF Item to be assembled at direct support maintenance level.
- AH Item to be assembled at general support maintenance level.
- AD Item to be assembled at depot maintenance level.
- XA Item is not procured or stocked because the requirements for the item will result in the replacement of the next higher assembly.
- XB Item is not procured or stocked. If not available through salvage, requisition.
- XD A support item that is not stocked. When required, item will be procured through normal supply channels.

NOTE

Cannibalization or salvage maybe used as a source of supply for any items source coded above except those coded XA or XD.

(2) Maintenance Code. Maintenance codes are assigned to indicate the levels of maintenance authorized to use and repair support items. The maintenance codes are entered in the third and fourth positions of the Uniform SMR Code format as follows:

(a) The maintenance code entered in the third position will indicate the lowest maintenance level authorized to remove, replace and use the support item. The maintenance code entered in the third position will indicate one of the following levels of maintenance.

Code	Application/Explanation
C	Crew or operator maintenance performed within organizational maintenance.
O	Support item is removed, replaced, used at the organizational level.
I	Support item is removed, replaced, used

by the direct support element of integrated direct support maintenance.

- F Support item is removed, replaced, used at the direct support level.
- H Support item is removed, replaced, used at the general support level.
- D Support items that are removed, replaced, used at depot, mobile depot, specialized repair activity only.

NOTE

Codes "I" and "F" will be considered the same by direct support units.

(b) The maintenance code entered in the fourth position indicates whether the item is to be repaired and identifies the lowest maintenance level with the capability to perform complete repair (i.e., all authorized maintenance functions). This position will contain one of the following maintenance codes:

Code	Application/Explanation
O	The lowest maintenance level capable of complete repair of the support item is the organizational level.
F	The lowest maintenance level capable of complete repair of the support item is the direct support level.
H	The lowest maintenance level capable of complete repair of the support item is the general support level.
D	The lowest maintenance level capable of complete repair of the support item is the depot level.
L	Repair restricted to designated specialized repair activity.
Z	Nonreparable. No repair is authorized.
B	No repair is authorized. The item maybe reconditioned by adjusting, lubricating, etc., at the user level. No parts or special tools are procured for the maintenance of this item.

(3) Recoverability Code. Recoverability codes are assigned to support items to indicate the disposition action on unserviceable items. The recoverability code is entered in the fifth position of the Uniform SMR Code format as follows:

<i>Recoverability Codes</i>	<i>Definition</i>
Z	Nonreparable item. When unserviceable, condemn and dispose at the level indicated in Position 3.
O	Reparable item. When uneconomically repairable, condemn and dispose at organizational level.
F	Reparable item. When uneconomically repairable, condemn and dispose at the direct support level.
H	Reparable item. When uneconomically repairable, condemn and dispose at the general support level.
D	Reparable item. When beyond lower level repair capability, return to depot. Condemnation and disposal not authorized below depot level.
L	Reparable item. Repair, condemnation, and disposal not authorized below depot/specialized repair activity level.
A	Item requires special handling or condemnation procedures because of specific reasons (i.e., precious metal content, high dollar value, critical material or hazardous material). Refer to appropriate manuals/directives for specific instructions.

c. National Stock Number. Indicates the National Stock Number assigned to the item and will be used for requisitioning purposes.

d. Part Number. Indicates the primary number used by the manufacturer which controls the design and characteristics of the item by means of its engineering drawings, specifications, standards, and inspection requirements to identify an item or range of items.

NOTE

When a stock number item is requisitioned the repair part received may have a different part number than the part being replaced.

e. Federal Supply Code for Manufacturer (FSCM). The FSCM is a 5-digit numeric code listed in SB 708-42 which is used to identify the manufacturer, distributor, or Government agency, etc.

f. Description. Indicates the Federal item name and, if required, a minimum description to identify the item. Items that are included in kits are listed below the name of the kit with the quantity of each item in the kit indicated in the quantity incorporated in unit column. When the part to be used differs between serial numbers of the same model, the effective serial numbers are shown as the last line of the description. In the Special Tools List, the initial basis of issue (BOI) appears as the last line in the entry for each special tool, TMDE, and support equipment. When density of equipments supported exceeds density spread indicated in the basis of issue, the total authorization is increased accordingly.

g. Unit of Measure (U/M). Indicates the standard of the basic quantity of the listed items as used in performing the actual maintenance function. This measure is expressed by a two-character alphabetical abbreviation (e.g., ea, in, pr, etc.). When the unit of measure differs from the unit of issue, the lowest unit of issue that will satisfy the required units of measure will be requisitioned.

h. Quantity Incorporated in Unit. Indicates the quantity of the item used in the breakout shown on the illustration figure, which is prepared for a functional group, subfunctional group, or an assembly. A "V" appearing in this column in lieu of a quantity indicates that no specific quantity is applicable (e.g., shims, spacers, etc.).

4. Special Information.

a. Repair kits and gasket sets appear as the last entries in the repair parts listing for the figure in which its parts are listed as repair parts or are listed at the end of the repair parts listing for the last figure containing parts of the kit.

b. The following publication pertains to the Air Conditioner and its components:

Publication and Short Title

Air Conditioner, Vertical Compact,
18,000 BTU/HR

c. In the parts list, some items are indented to show that they are a component or components of the item under which they are indented.

5. How to Locate Repair Parts.

a. When National Stock Number or Part Number is Unknown.

(1) First. Using the table of contents, determine the functional group within which the repair

part belongs. This is necessary since illustrations are prepared for functional groups, and listings are divided into the same groups.

(2) Second. Find the illustration covering the functional group to which the repair part belongs.

(3) Third. Identify the repair part on the illustration and note the illustration figure and item number of **the repair part**.

(4) Fourth. Using the Repair Parts Listing, find the figure and item number noted on the illustration.

b. When the National Stock Number or Part Number is Known.

(1) First. Using the Index of National Stock Numbers and Part Numbers, find the pertinent National stock number or part number. This index is in ascending NSN sequence followed by a list of part numbers in ascending alphanumeric sequence, cross-referenced to the illustration figure

number and item number.

(2) Second. After finding the figure and item number, locate the figure and item number in the repair parts list.

6. Abbreviations.

Abbreviations	Explanation
deg	degree(s)
ea	each
ft	feet (foot)
grp	group
id	inside diameter
in	inch(es)
lg	long (length)
mtg	mounting(s)
No	Number(s)
od	outside diameter
u/w	used with

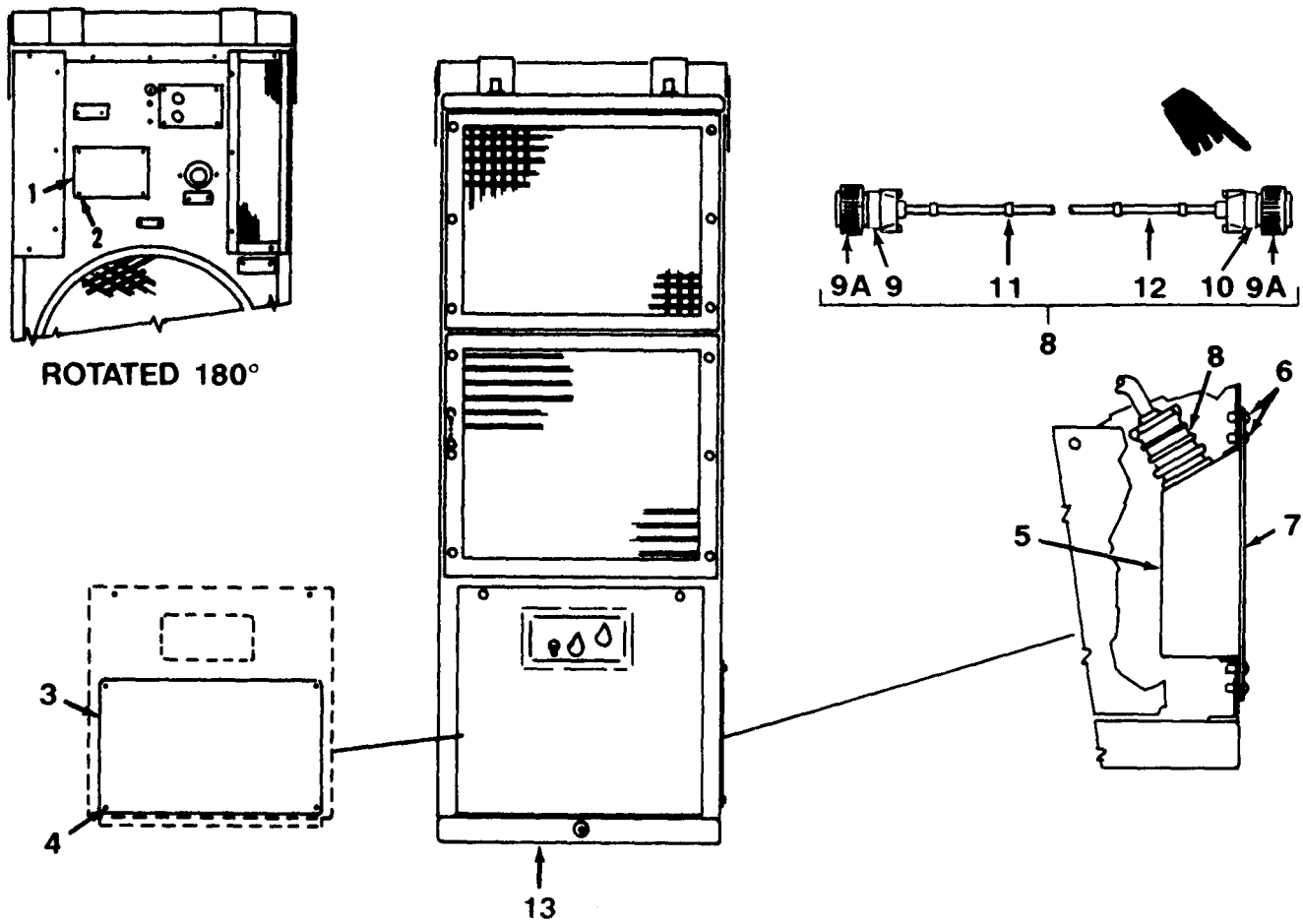


Figure 1. Air Conditioner, 18,000 BTU/HR, 60Hz.

SECTION II		REPAIR PARTS LIST				TM5-4120-356-24P		
(1)	(2)	(3)	(4)	(5)	(6)	(7)	(8)	
ILLUSTRATION								
(A)	(B)		NATIONAL		DESCRIPTION		QTY	
FIG	ITEM	SMR	STOCK	PART			INC	
NO.	NO.	CODE	NUMBER	FSCM	NUMBER	USABLE ON CODE	IN	
							UNIT	
GROUP 01 CASINGS AND RELATED PARTS								
1	1	XBOZZ		81349	MIL-P-514	PLATE	EA 1	
1	2	PAOZZ	5320-00-117-6628	96906	MS2047CAD4-6	RIVET, SOLID	EA 4	
1	3	XBOZZ		97403	13215E6878-1	PLATE, WIRING DIAGRAM	EA 1	
1	4	PAOZZ	5320-00-117-6828	96906	MS2047CAD4-6	RIVET, SOLID	EA 4	
1	5	PAOZZ	5915-01-051-2774	23939	A1444	FILTER, RADIO FREQUENCY	EA 1	
1	6	PAOZZ	5305-00-989-7435	96906	MS35207-264	SCREW, MACHINE	EA 14	
1	7	XBOZZ		97403	13220E5618	PLATE, FILTER MTG	EA 1	
1	8	MOOOO		97403	13217E2342	WIRING HARNESS MAKE FROM	EA 1	
1	9	PAOZZ	5935-01-118-5714	96906	MS3456W22-22S	.CONNECTOR, PLUG, ELEC	EA 1	
1	9A	PAOZZ	5935-01-172-8574	81349	M85049/52-1-22W	.CLAMP, CABLE, ELECTRICAL	EA 2	
1	10	PAOZZ	5935-01-062-2402	96906	MS3456W-22-22P	.CONNECTOR, PLUG, ELEC	EA 1	
1	11	PAOZZ	5975-01-013-2742	96906	MS3367-1-9	.STRAP, TIEDOWN, ELECT	EA V	
1	12	MOOOZ		81349	M5086/1-10-9	.WIRE, ELECTRICAL	FT V	
1	13	XBOFH		97403	13215E9855-1	AIR COND 18K BTU/HR	EA 1	

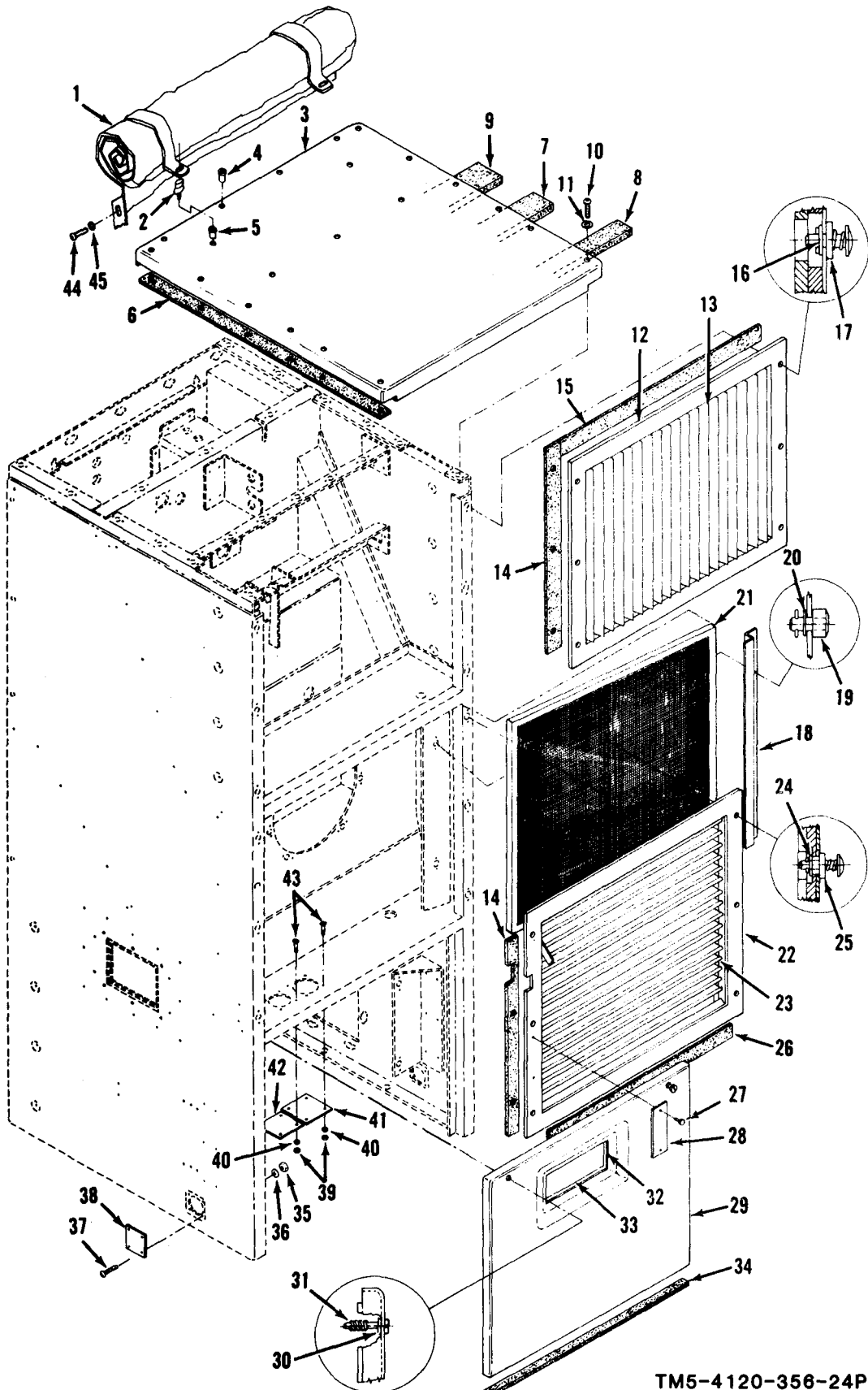


Figure 2. Panels, Covers and Grilles

TM5-4120-356-24P/2

SECTION II		(2)	(3)	(4)	(5)	(6)	(7)	(8)
ILLUSTRATION								
(A)	(B)		NATIONAL		PART			QTY
FIG	ITEM	SMR	STOCK	FSCM	NUMBER	DESCRIPTION		INC
NO.	NO.	CODE	NUMBER			USABLE ON CODE	U/M	IN
								UNIT
2	1	PAOZZ	4130-01-051-7426	97403	1321762346	.COVER, AIR CONDITIONER	EA	1
2	2	PAOZZ	5325-00-990-4249	97403	1321483647-2	.STUD, TURNBUTCN PASTENER	EA	2
2	3	XBOOZ		97403	13215E9892	.PANEL, TOP	EA	1
2	4	PAOZZ	5310-00-143-6203	80205	NAS1329S08K875	..NUT, PLAIN BLIND, RIV	EA	4
2	5	PAOZZ	5310-00-853-4488	80205	NAS1329S06K875	..NUT, PLAIN, BLIND RIV	EA	2
2	6	MFFFFZ		97403	13218E9997-1	..SHIELDING GASKET, ELECTRICAL MFR FROM P/N 07-0501-2054	FT	V
2	7	MFFFFF		97403	13218E9878-3	..GASKET RFI MFR FROM P/N 01-0201-1769	FT	V
2	8	MOOOO		81349	MIL-I-14511X.500	..INSULATION SHEET MAKE FROM MIL-I-14511 X .500 STOCK	SH	V
2	9	MOOOO		81349	MIL-I-14511 .250	..INSULATION MFR FROM MAKE FROM MIL-I-14511 X .250 STOCK	SH	V
2	10	PAOZZ	5305-00-984-6193	96906	MS35206-245	.SCREW, MACHINE	EA	19
2	11	PAOZZ	5330-00-170-0127	80205	NAS1523C08F	.PACKING WITH RETAINER	EA	19
2	12	XBOOZ	4120-01-054-6534	97403	13215E9857	.LOUVER, METAL	EA	1
2	13	XBOZZ		97403	13217E6853	..GRILLE, DISCHARGE	EA	1
2	14	MOOOO		81349	MIL-T-6130 TY II GR A .250 STK	..RUBBER CELLULAR MFR FROM .250 STK	FT	V
2	15	MOOOO		81349	MIL-R-6130 TY II GR A .125 STK	..RUBBER CELLULAR MGR FROM .125 STK	FT	V
2	16	PAOZZ	5310-00-530-9963	71286	5S3-1	..WASHER, SPLIT	EA	6
2	17	PAOZZ	5325-00-938-5913	71286	12S1-21-1AA	..STUD ASSEMBLY, TURNBUTTON FASTENER	EA	6
2	18	PAOZZ	4130-00-357-0520	97403	13215E9823	.RETAINER, AIR FILTER	EA	1
2	19	PAOZZ	5325-00-724-7655	71286	12S1-9-1AA	..STUD ASSEMBLY, TURNBUTTON FASTENER	EA	2
2	20	PAOZZ	5310-00-530-9963	71286	5S3-1	..WASHER, SPLIT	EA	2
2	21	PAOZZ	4130-00-981-6615	00736	124020	.FILTER ELEMENT, AIR	EA	1
2	22	XBOZZ	4130-01-047-8362	97403	13215E9854	.LOUVER, METAL	EA	1
2	23	XBOZZ		97403	13211E8210	..GRILL, INTAKE	EA	1
2	24	PAOZZ	5310-00-530-9963	71286	5S3-1	..WASHER, SPLIT	EA	6
2	25	PAOZZ	5325-00-938-5913	71286	12S-21-1AA	..STUD ASSEMBLY, TURNBUTTON FASTENER	EA	6
2	26	MOOOO		81349	MIL-R-6130 TY II GR A .250 STK	..RUBBER CELLULAR MFR FROM .250 STK	FT	V
2	27	PAOZZ	5320-00-117-6937	96906	MS20426A03-3	..RIVET	EA	2
2	28	XBOZZ	9905-01-053-5362	97403	13217E2344	..PLATE, INSTRUCTION	EA	1
2	29	XB00Z	4130-01-108-0773	97403	13215E9873	.PANEL, LOWER	EA	1
2	30	PAOZZ	5310-00-880-9344	94222	12-11014-12	..WASHER, LOCK	EA	2
2	31	PAOZZ	5305-00-163-8349	97403	13214E3744V34	..SCREW	EA	1
2	32	MFFFFF		97403	13218E9879-2	..GASKET RFI 2.69LG	FT	V
2	33	MFFFFF		97403	13218E9879-2	..GASKET RFI 6.12LG	FT	V
2	34	MFFFFF		97403	13218E9879-2	.. GASKET RFI 14.86LG	FT	V
2	35	PAOZZ	5310-00-934-9739	96906	MS35649-242	.NUT, PLAIN, HEXAGON	EA	4
2	36	PAOZZ	5310-00-543-2410	96906	MS35338-40	.WASHER, LOCK	EA	4
2	37	PAOZZ	5305-00-889-2999	96906	MS35206-217	.SCREW, MACHINE	EA	4
2	38	XBOZZ		97403	13214E3471-5	.COVER, RECEPTACLE	EA	1

SECTION II

(1)	(2)	(3)	(4)	(5)	(6)	(7)	(8)	
ILLUSTRATION					DESCRIPTION		QTY	
(A)	(B)	NATIONAL					INC	
FIG	ITEM	SMR	STOCK	PART			IN	
NO.	NO.	CODE	NUMBER	FSCM	NUMBER	USABLE ON CODE	U/M	UNIT
2	39	PAOZZ	5310-00-934-9739	93906	MS35649-242	.NUT, PLAIN, HEXAGON	EA	8
2	40	PAOZZ	5310-00-543-2410	96906	MS35338-40	.WASHER, LOCK	EA	8
2	41	XBOZZ		97403	13214E3471-2	.COVER	EA	1
2	42	XBOZZ		97403	13214E3471-5	.COVER, RECEPTACLE	EA	1
2	43	PAOZZ	5305-00-808-7834	96906	MS24693-S6	.SCREW, MACHINE	EA	8
2	44	PAOZZ	5305-00-984-6193	96906	MS35206-245	.SCREW, MACHINE	EA	8
2	45	PAOZZ	5310-00-765-3197	96906	MS27183-41	.WASHER, FLAT	EA	8

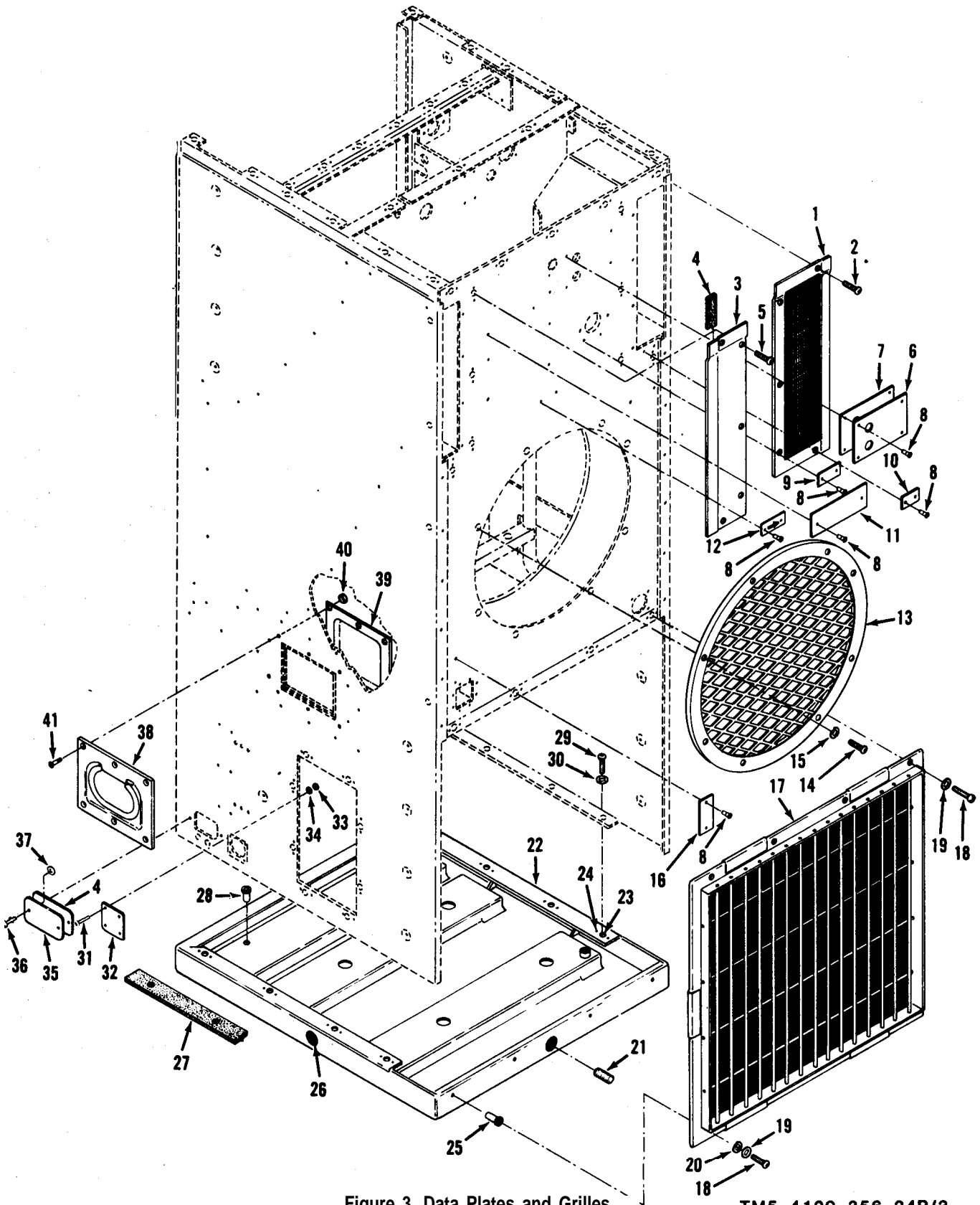


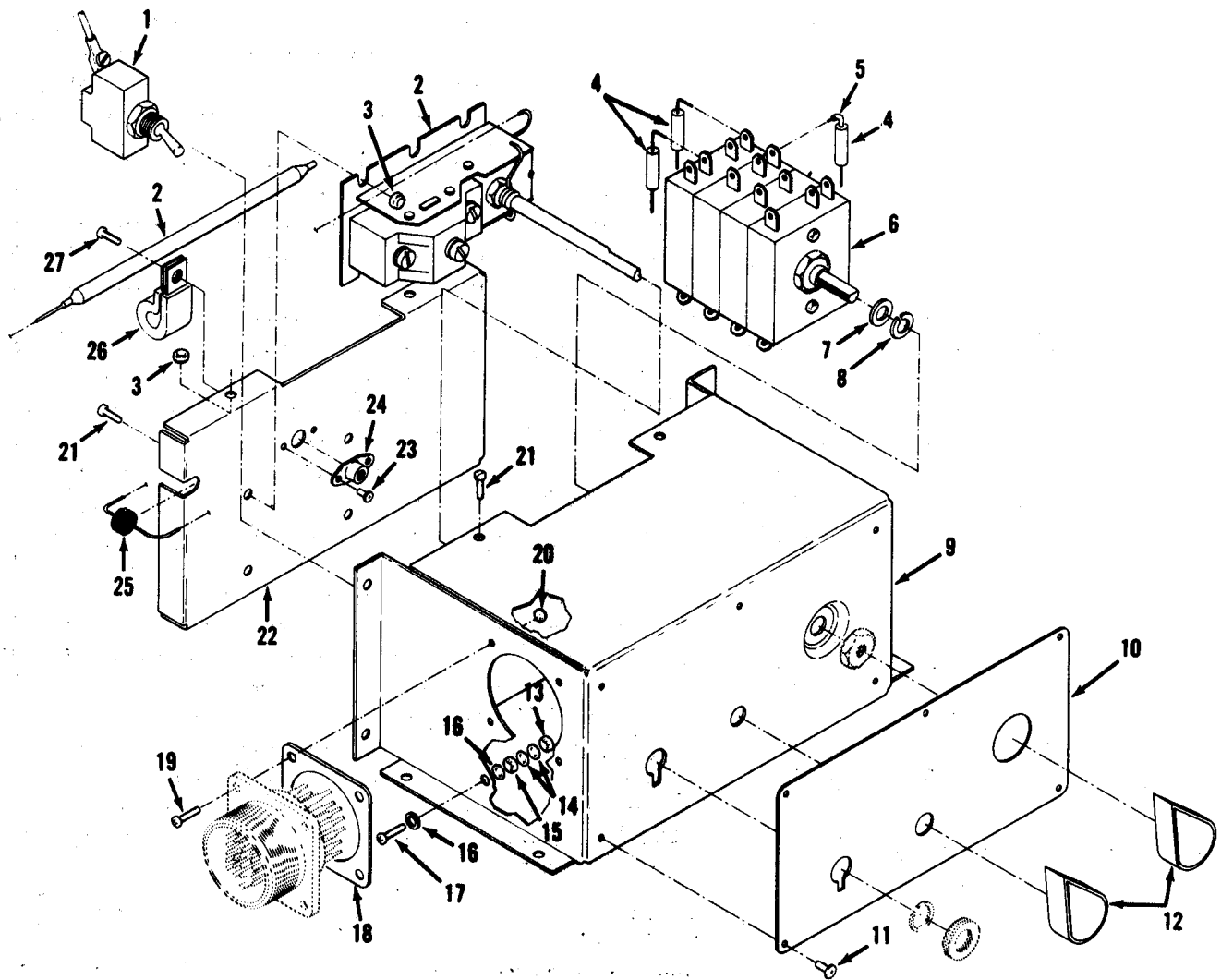
Figure 3. Data Plates and Grilles

TM5-4120-356-24P/3

SECTION II								
(1)	(2)	(3)	(4)	(5)	(6)	(7)	(8)	
ILLUSTRATION							QTY	
(A)	(B)		NATIONAL	PART	DESCRIPTION		INC	
FIG	ITEM	SMR	STOCK	NUMBER			IN	
NO.	NO.	CODE	NUMBER	FSCM	NUMBER	USABLE ON CODE	U/M	
							UNIT	
3	1	XBOZZ	4130-00-357-0519	97403	13215E9858	.SCREEN,FRESH AIR	EA	1
3	2	PAOZZ	5305-00-984-6193	96906	MS35206-245	. SCREW,MACHINE	EA	5
3	3	XBOZZ		97403	13215E9863	.COVER CBR DUCT	EA	1
3	4	MOOOO		81346	ASTM-C-1056 SBE-42-CF2 .250 STK	..RUBBER SHEET MFR FROM .250 STOCK	SH	V
3	5	PAOZZ	5305-00-984-6195	96906	MS35206-247	.SCREW,MCHINE	EA	5
3	6	XBOZZ	9905-00-165-7472	97403	13215E9847	.PLATE,INSTRUCTION	EA	1
3	7	PAOZZ	5330-00-702-6032	97403	13215E9852	.GASKET	EA	1
3	8	PAOZZ	5320-00-845-9501	96906	MS20600B4W4	.RIVET,BLIND	EA	14
3	9	XBOZZ	9905-00-165-7474	97403	13211E8215	.PLATE,INSTRUCTION	EA	1
3	10	XBOZZ	9905-00-165-7471	97403	13215E9917	.PLATE,INSTRUCTION	EA	1
3	11	XBOZZ	9905-01-055-6369	97403	13215E9844	.PLATE,INSTRUCTION	EA	1
3	12	XBOZZ	9905-01-055-0216	97403	13211E8216	.PLATE,DESIGNATION	EA	1
3	13	XBOZZ	4130-00-764-9206	97403	13211E8183	.GUARD,FAN	EA	1
3	14	PAOZZ	5305-00-984-6195	96906	MS35206-247	.SCREW,MACHINE	EA	8
3	15	PAOZZ	5310-00-045-3299	96906	MS35338-42	.WASHER,LOCK	EA	8
3	16	XBOZZ	9905-01-055-6368	97403	1322CE5617	.PLATE,INSTRUCTION	EA	1
3	17	XBOZZ		97403	13215E9867	.GUARD,CONDENSER	EA	1
3	18	PAOZZ	5305-00-984-6196	96906	MS35206-248	.SCREW,MACHINE	EA	8
3	19	PAOZZ	5310-00-765-3197	96906	MS27183-41	.WASHER,FLAT	EA	8
3	20	PAOZZ	5310-00-045-3299	96906	MS35338-42	.WASHER,LOCK	EA	4
3	21	PAOZZ	4730-00-007-9399	97403	13211E8178	.PLUG,PIPE	EA	4
3	22	XBFZZ		97403	13215E9865	. PANEL BOTTOM	EA	1
3	23	PAFZZ	5310-00-655-5886	80205	NAS1031A04	..NUT SELF-LKG PLATE	EA	8
3	24	PAFZZ	5320-00-117-6937	96906	MS20426AD3-3	..RIVET	EA	16
3	25	PAOZZ	5310-00-917-8592	96906	MS27130S14	..NUT BLIND RIVET	EA	6
3	26	XBFZZ		97403	13211E8177	..CONNECTION DRAIN	EA	4
3	27	MFFFZ		97403	13218E9997-1	..SHIELDING GASKET, ELECTRICAL MFR FROM P/N 07-0501-20	FT	V
3	28	PAFZZ	5310-00-958-5321	96906	MS27130-S26K	..NUT,PLAIN,BLIND RIV	EA	3
3	29	PAFZZ	5305-00-267-8953	96906	MS90727-5	.SCREW,CAP,HEXAGON H	EA	8
3	30	PAFZZ	5310-00-543-2009	96906	MS15795-710	.WASHER,FLAT	EA	8
3	31	PAOZZ	5305-00-889-2999	96906	MS35206-217	.SCREW,MACHINE	EA	4
3	32	XBOZZ		97403	13214E3471-5	.COVER,RECEPTACLE	EA	1
3	33	PAOZZ	5310-00-934-9739	96906	MS35649-242	.NUT,PLAIN,HEXAGON	EA	4
3	34	PAOZZ	5310-00-543-2410	96906	MS35338-40	.WASHER,LOCK	EA	4
3	35	XBOOO		97403	13217E2343	.PANEL ACCESS	EA	1
3	36	PAOZZ	5325-00-954-3832	71286	12S1-14-1AA	..STUD ASSEMBLY TURNBUTTON FASTENER	EA	2
3	37	PAOZZ	5310-00-530-9963	71286	5S3-1	..WASHER,SPLIT	EA	2
3	38	PAFZZ	5340-01-094-4587	96906	MS35792-1	.HANDLE,BAIL	EA	2
3	39	XBFZZ		97403	13215E9832	.ENCLOSURE	EA	2

SECTION II

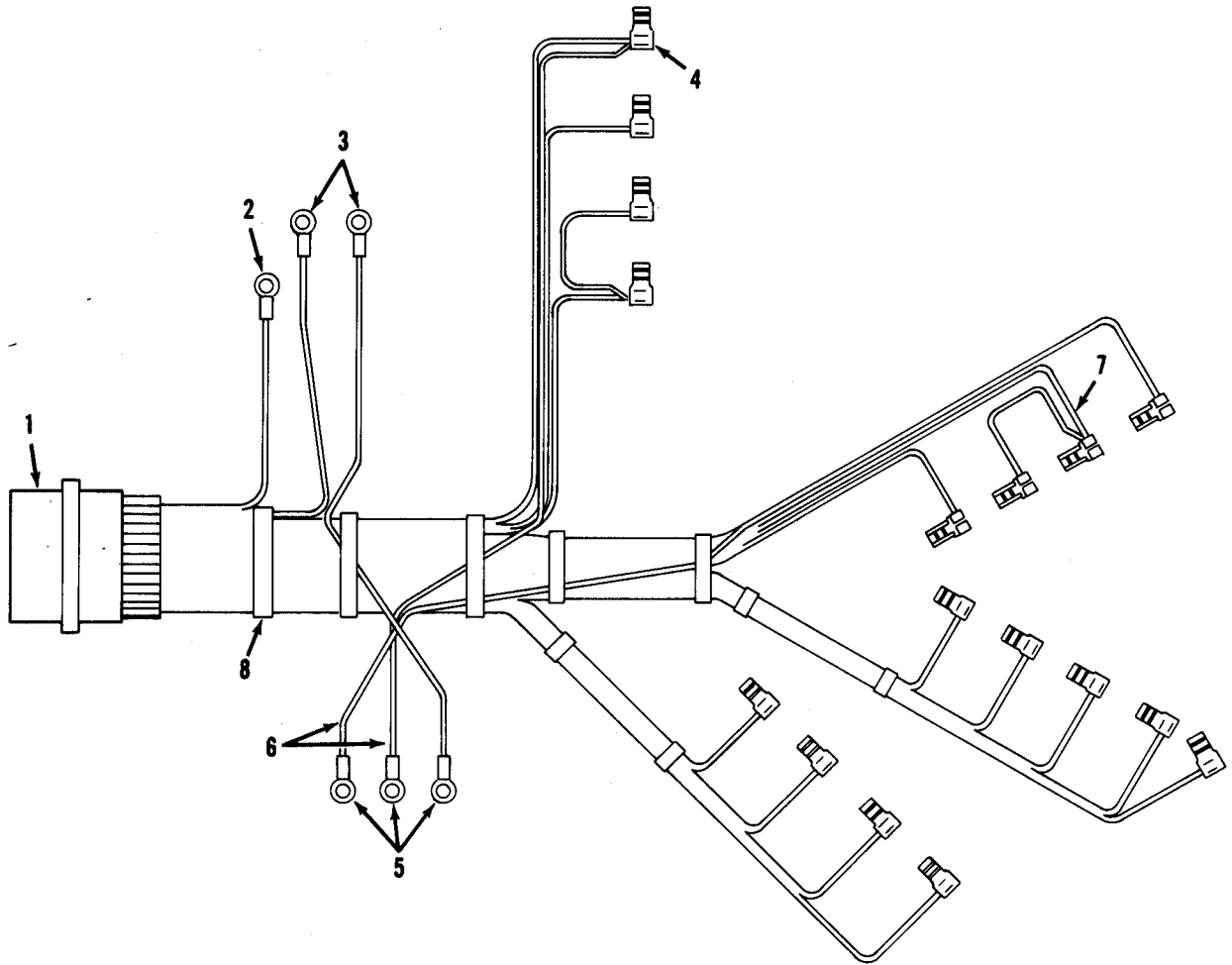
(1)	(2)	(3)	(4)	(5)	(6)	(7)	(8)	
ILLUSTRATION							QTY	
(A)	(B)	NATIONAL			DESCRIPTION		INC	
FIG	ITEM	SMR	STOCK	PART			IN	
NO.	NO.	CODE	NUMBER	FSCM	NUMBER	USABLE ON CODE	U/M	UNIT
3	40	PAFZZ	5310-00-877-5798	96906	MS21044D3	.NUT, SELF-LOCKING, HE	EA	12
3	41	PAFZZ	5305-00-984-7341	96906	MS35191-273	.SCREW, MACHINE	EA	12



TM 5-4120-356-24P/4

Figure 4. Control Panel Assembly

SECTION II								
(1)	(2)	(3)	(4)	(5)	(6)	(7)	(8)	
ILLUSTRATION							QTY	
(A)	(B)	NATIONAL		PART	DESCRIPTION		INC	
FIG	ITEM	STOCK		NUMBER			IN	
NO.	NO.	NUMBER	FSCM	NUMBER	USABLE ON CODE	U/M	UNIT	
GROUP 02 CONTROL BOX AND JUNCTION BOX								
4		XBOOZ 4120-01-062-0698	97403	13218E8492-1	PANEL ASSEMBLY, CONTROL	EA	1	
4	1	PAOZZ 5930-00-683-1628	96906	MS24523-22	.SWITCH, TOGGLE	EA	1	
4	2	PAOZZ 5930-00-923-4176	92578	A19AGF-10	.SWITCH, THERMOSTATIC	EA	1	
4	3	PAOZZ 5310-00-889-2549	96906	MS21045-08	.NUT, SELF-LOCKING, HEXAGON	EA	8	
4	4	PAOZZ 5905-00-420-7238	81349	MIL-R-39008-3	.RESISTOR	EA	3	
4	5	MOOOO		MIL-I-23053/5 CL I CLR CPT .063ID	.INSULATION SLEEVING	FT	V	
4	6	PAOZZ 5930-00-236-2351	90611	2267A1	.SWITCH, ROTARY	EA	1	
4	7	PAOZZ 5310-00-080-6004	96906	MS27183-14	.WASHER, FLAT	EA	1	
4	8	PAOZZ 5310-00-627-6128	96906	MS35335-35	.WASHER, LOCK	EA	1	
4	9	XBOZZ	97403	13218E8493	.CONTROL PANEL	EA	1	
4	10	XBOZZ 9905-01-055-6370	97403	13218E8495	. .PLATE, INSTRUCTION	EA	1	
4	11	PAOZZ 5320-00-582-3305	96906	MS20600AD4W3	. .RIVET BLIND	EA	5	
4	12	PAOZZ 5355-00-916-2060	96906	MS91528-2P4B	.KNOB	EA	2	
4	13	PAOZZ 5310-00-061-7326	96906	MS21045-3	.NUT, SELF-LOCKING, HEXAGON	EA	1	
4	14	PAOZZ 5310-00-809-8546	96906	MS27183-8	.WASHER, FLAT	EA	2	
4	15	PAOZZ 5310-00-934-9751	96906	MS35650-302	.NUT, PLAIN, HEXAGON	EA	1	
4	16	PAOZZ 5310-00-802-8544	96906	MS15795-709	.WASHER, FLAT	EA	2	
4	17	PAOZZ 5305-00-995-3444	96906	MS35207-266	.SCREW, MACHINE	EA	1	
4	18	PAOZZ 5330-00-828-3628	96906	MS51007-10	.GASKET	EA	1	
4	19	PAOZZ 5305-00-889-3001	96906	MS35206-231	.SCREW, MACHINE	EA	4	
4	20	PAOZZ 5310-00-889-2544	96906	MS21045-06	.NUT, SELF-LOCKING, HEXAGON	EA	4	
4	21	PAOZZ 5305-00-984-6192	96906	MS35206-244	.SCREW, MACHINE	EA	8	
4	22	XBOZZ	97403	13218E8494	.PANEL	EA	1	
4	23	PAOZZ 5320-00-165-8307	96906	MS2047CAD3-2	. .RIVET	EA	2	
4	24	PAOZZ 5310-00-623-5989	80205	NAS1031-A3	. .NUT SELF-LOCK PLATE	EA	1	
4	25	PAOZZ 5325-00-286-6047	96906	MS35489-1	.GROMMET, NONMETALLIC	EA	1	
4	26	PAOZZ 5340-00-103-2976	96906	MS21105-6	.CLAMP LOOP	EA	1	
4	27	PAOZZ 5305-00-989-6265	96906	MS35207-262	.SCREW, MACHINE	EA	1	



TM 5-4120-356-24/5

Figure 5. Wiring Harness, Control Panel

SECTION II

(1)	(2)	(3)	(4)	(5)	(6)	(7)	(8)
ILLUSTRATION							
(A)	(B)	NATIONAL		PART	DESCRIPTION		QTY
FIG	ITEM	STOCK		NUMBER		USABLE ON CODE	INC
NO.	NO.	NUMBER	FSCM	NUMBER			IN
							U/M
							UNIT
5		MOOOO		97403 13215E9853	.WIRING HARNESS, CONTROL PANEL ASSEMBLY MAKE FROM:		EA 1
5	1	PAOZZ	5935-00-818-7448	96906 MS3102928-11P	..CONNECTOR, RECEPTACLE		EA 1
5	2	PAOZZ	5940-00-143-4780	96906 MS25036-108	..TERMINAL,LUG		EA 1
5	3	PAOZZ	5940-00-283-5280	96906 MS25036-106	..TERMINAL,LUG		EA 2
5	4	PAOZZ	5940-00-859-4475	19085 41532	..TERMINAL,QUICK DISC		EA 17
5	5	PAOZZ	5940-00-143-4774	96906 MS25036-153	..TERMINAL,LUG		EA 3
5	6	MOOOZ		81349 M5086/2-16-9	..WIRE,ELECTRICAL		FT V
5	7	MOOOZ		81349 M5086/2-14-9	.. WIRE,ELECTRICAL		FT V
5	8	PAOZZ	5975-00-074-2072	96906 MS3367-1-9	.. STRAP,CABLE		EA V

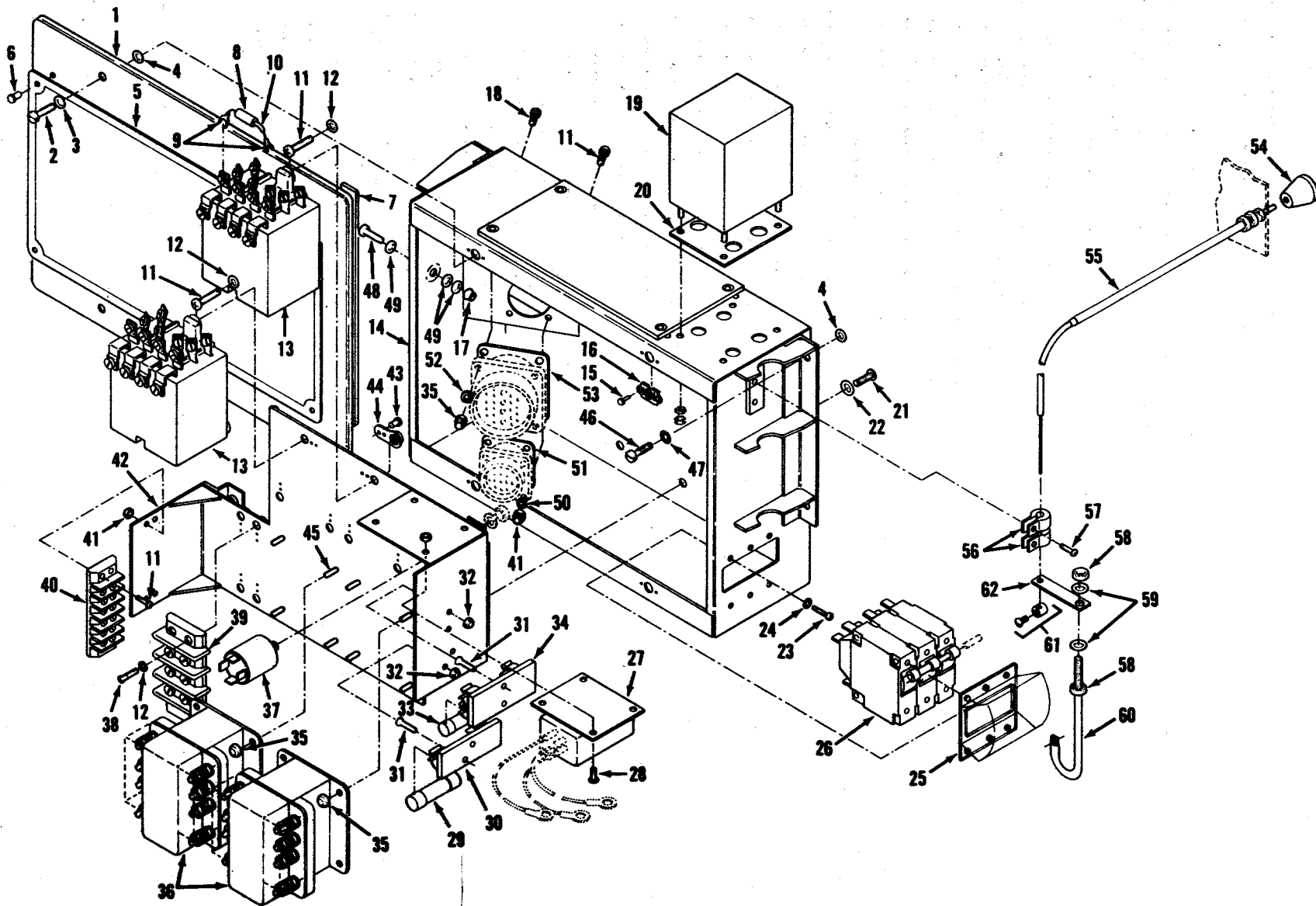


Figure 6. Junction Box Assembly

TM5-4120-356-24P/6

SECTION II		(2)	(3)	(4)	(5)	(6)	(7)	(8)
(1)	ILLUSTRATION							
(A)	(B)		NATIONAL		PART			QTY
FIG	ITEM	SMR	STOCK	FSCM	NUMBER	DESCRIPTION	USABLE ON CODE	INC
NO.	NO.	CODE	NUMBER					IN
								UNIT
6		XBOOZ		97403	13217E2366-1	JUNCTION BOX ASSY		EA 1
6	1	XBOZZ	5975-01-045-9683	97403	13215E9893	.COVER,JUNCTION BOX		EA 1
6	2	PAOZZ	5305-01-018-5599	94222	12-11-204-12	..SCREW, PANEL FASTENER		EA 4
6	3	PAOZZ	5330-01-054-1553	80205	NAS1523C4F	..PACKING, WITH RETAINER		EA 4
6	4	PAOZZ	5310-00-880-9344	97403	13211E8337	..WASHER,LOCK		EA 4
6	5	XBOZZ	9905-01-066-9540	97403	13217E2341	..PLATE,FLUID DIAGRAM		EA 1
6	6	PAOZZ	5320-00-582-3272	96906	MS206CCB4W	..RIVET,BLIND		EA 4
6	7	MOOOO		81346	ASTM-C-1056 SBF-42-CF2.125 STK	..SHEET,RUBBER MFR FROM .125 STOCK		SH V
6	8	PAOOZ	5961-01-055-2188	97403	13215E9881	.SEMICONDUCTOR DEVICE		EA 1
6	9	PAOZZ	5940-00-557-1629	96906	MS25036-149	..TERMINAL,LUG		EA 2
6	10	MOOOO		81349	MIL-I-23053 CL I BLACK .125 ID	..INSULATION,TUBING HEAT SHRINKABLE MFR FROM BLACK .125 IC FT X .020 NOM WALL THK X AR LG		V
6	11	PAOZZ	5305-00-983-6730	96906	MS35206-218	.SCREW,MACHINE		EA 18
6	12	PAOZZ	5310-00-950-1310	96906	MS27183-4	.WASHER,FLAT		EA 14
6	13	PAOZZ	5945-00-430-6933	77342	PM4030	.RELAY,ELECTROMAGNET		EA 2
6	14	XBOZZ		97403	13217E2367	.JUNCTION BOX		EA 1
6	15	PAOZZ	5320-00-835-5368	96906	MS20601AD4W8	..RIVET		EA 8
5	16	PAOZZ	5310-00-089-6304	94222	12-11C20-11	..NUT,SHEET SPRING		EA 4
6	17	PAOZZ	5310-00-061-7326	96906	MS21045-3	.NUT,SELF-LOCKING,HEXAGON		EA 1
6	18	PAOZZ	5305-00-984-6195	96906	MS35206-247	.SCREW,MACHINE		EA 4
6	19	PAOZZ	5950-00-493-5583	95970	C1-13490	.TRANSFORMER,POWER		EA 1
6	20	PAOZZ	9905-00-165-7470	97403	13214E3685-2	.PLATE,IDENTIFICATION		EA 1
6	21	PAOZZ	5305-00-989-6265	96906	MS35207-262	.SCREW,MACHINE		EA 8
6	22	PAOZZ	5330-00-119-7503	80205	NAS1523C3F	.PACKING, WITH RETAINER		EA 8
6	23	PAOZZ	5305-00-984-4982	96906	MS35206-225	.SCREW,MACHINE		EA 6
6	24	PAOZZ	5310-00-045-4007	96906	MS35338-41	.WASHER,LOCK		EA 6
6	25	PAOZZ	5925-01-071-7019	74193	006-10245	.COVER,BREAKER		EA 1
6	26	PAOZZ	5925-00-236-2349	74193	JA3-Z18-3	.CIRCUIT BREAKER		EA 1
6	27	PAOZZ	5945-00-007-7669	02289	1600S590-3	.RELAY,SOLID STATE		EA 1
6	28	PAOZZ	5305-00-984-4988	96906	MS35206-228	.SCREW,MACHINE		EA 4
6	29	PAOZZ	5920-00-939-5442	71400	KAW5	.FUSE,CARTRIDGE		EA 1
6	30	XBOZZ		97403	13214E3811	.FUSE HOLDER		EA 1
6	31	PAOZZ	5305-00-059-4552	96906	MS35190-237	.SCREW,MACHINE		EA 4
6	32	PAOZZ	5310-00-889-2544	96906	MS21045-06	.NUT,SELF-LOCKING,HEXAGON		EA 8
6	33	PAOZZ	5920-00-688-4085	81349	MIL-F-15160/9	.FUSE		EA 2
6	34	XBOZZ		97403	13211E3784	.FUSE HOLDER		EA 1
6	35	PAOZZ	5310-00-889-2549	96906	MS21045-08	.NUT,SELF-LOCKING,HEXAGON		EA 4
6	36	PAOZZ	5945-00-549-6348	96906	MS24192-D1	.RELAY,25AMP		EA 2
6	37	PAOZZ	5961-00-106-5259	58849	SS0329	.RECTIFIER		EA 1
6	38	PAOZZ	5305-00-984-4976	96906	MS35206-219	.SCREW,MACHINE		EA 4

SECTION II								
(1)	(2)	(3)	(4)	(5)	(6)	(7)	(8)	
ILLUSTRATION							QTY	
(A)	(B)	NATIONAL		PART	DESCRIPTION		INC	
FIG	ITEM	SMR	STOCK	NUMBER		USABLE ON CODE	IN	
NO.	NO.	CODE	NUMBER	FSCM	NUMBER		UNIT	
6	39	XBOZZ		97403	13213E0636	. TERMINAL BOARD	EA	1
6	40	XBOZZ		81349	MIL-T-55164/1	. TERMINAL BOARD	EA	1
6	41	PAOZZ	5310-889-2543	96906	MS21045-04	. NUT, SELF-LOCKING, HEXAGON	EA	4
6	42	XBOZZ		97403	13217E2368	. PANEL JUNCTION BOX	EA	1
6	43	PAOZZ	5320-00-117-6937	96906	MS20426HD3-3	. . RIVET	EA	20
6	44	XDOZZ	5310-00-655-5873	80205	NAS1032A04	. . NUT, SELF-LOCKING	EA	10
6	45	XBOZZ		97403	13214E4041-13	. . BOLT WELDING	EA	8
6	46	PAOZZ	5305-01-018-5599	94222	12-11-204-12	. SCREW, PANEL FASTENER	EA	4
6	47	PAOZZ	5310-00-550-1130	96906	MS35333-40	. WASHER, LOCK	EA	4
6	48	PAOZZ	5305-00-995-3444	96906	MS35207-266	. SCREW, MACHINE	EA	1
6	49	PAOZZ	5310-00-014-5850	96906	MS27183-42	. WASHER, FLAT	EA	3
6	50	PAOZZ	5310-00-950-1310	96906	MS27183-4	. WASHER, FLAT	EA	4
6	51	PAOZZ	5330-00-836-4356	96906	MS51007-8	. GASKET	EA	1
6	52	PAOZZ	5310-00-765-3197	96906	MS27183-41	. WASHER, FLAT	EA	4
6	53	PAOZZ	5330-00-838-6935	96906	MS51007-13	. GASKET	EA	1
6	54	PAOZZ	5355-00-171-2442	41625	B43310-1	. KNOB	EA	1
6	55	PAOZZ	3040-01-053-0566	41625	B4E701X26	. CONTROL ASSEMBLY	EA	1
6	56	PAOZZ	5340-00-078-3615	96906	MS21322-33	. CLAMP, LOOP	EA	2
6	57	PAOZZ	5305-00-990-6444	96906	MS35207-261	. SCREW, MACHINE	EA	2
6	58	PAOZZ	5310-00-934-9751	96906	MS35650-302	. NUT, PLAIN, HEXAGON	EA	2
6	59	PAOZZ	5310-00-765-3197	96906	MS27183-41	. WASHER, FLAT	EA	2
6	60	XBOZZ		97403	13220E5615-1	. ARM ACTUATOR	EA	1
6	61	XBOZZ		97403	13217E6817	. END FITTING CORE	EA	1
6	62	XBOZZ		97403	13220E5616	. CONNECTING PLATE	EA	1

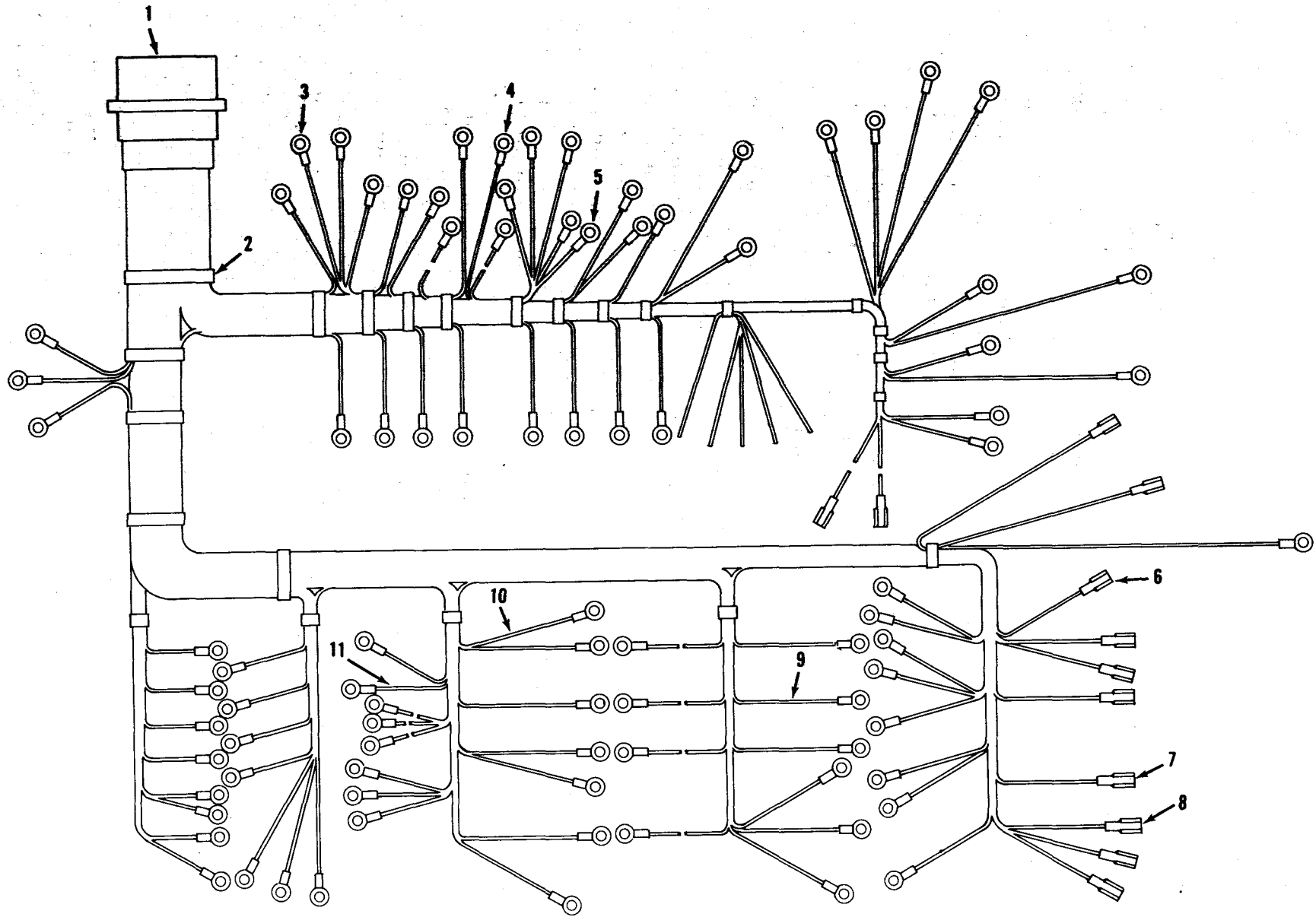
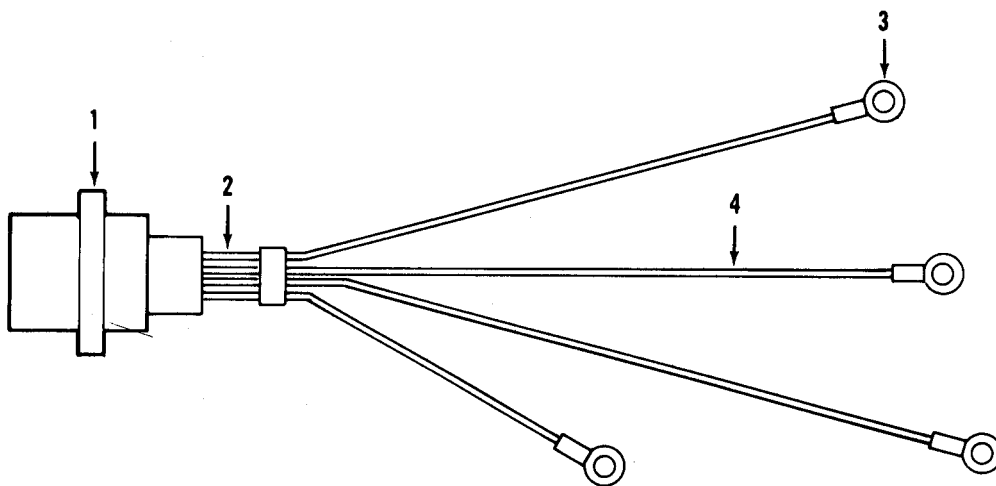


Figure 7. Wiring Harness, Junction Box, Three Phase

TM5-4120-356-24P/7

SECTION II

(1)	(2)	(3)	(4)	(5)	(6)	(7)	(8)
ILLUSTRATION							QTY
(A)	(B)	NATIONAL		PART	DESCRIPTION		INC
FIG	ITEM	SMR	STOCK	NUMBER		USABLE ON CODE	IN
NO.	NO.	CODE	NUMBER	FSCM	NUMBER		U/M
							UNIT
7		MOOOO		97403	13217E9879	.WIRING HARNESS, JUNCTION BOX THREE PHASE MAKE FROM	EA 1
7	1	PAOZZ	5935-00-824-7883	96906	MS3102R36-7S	..CONNECTOR,RECEPTACLE	EA 1
7	2	PAOZZ		96906	MS3367-1-9	..STRAP,TIEDOWN,ELECTRICAL	EA V
7	3	PAOZZ	5940-00-143-4774	96906	MS25036-153	..TERMINAL,LUG	EA 39
7	4	PAOZZ	5940-00-283-5280	96906	MS25036-106	..TERMINAL,LUG	EA 25
7	5	PAOZZ	5940-00-143-4780	96906	MS25036-108	..TERMINAL,LUG	EA 12
7	6	PAOZZ	5940-00-143-4794	96906	MS25036-112	..TERMINAL,LUG	EA 17
7	7	PAOZZ	5940-00-150-4682	00779	60537-1	..TERMINAL QUICK DISC	EA 2
7	8	PAOZZ	5940-00-432-2660	00779	61198-1	..TERMINAL,QUICK DISC 10 AWG	EA 4
7	9	MOOOZ		81349	M5086/2-12-9	..WIRE,ELECTRICAL	FT V
7	10	MOOOZ		81349	M5086/2-16-9	..WIRE,ELECTRICAL	FT V
7	11	MOOOZ		81349	M5086/2-14-9	..WIRE,ELECTRICAL	FT V

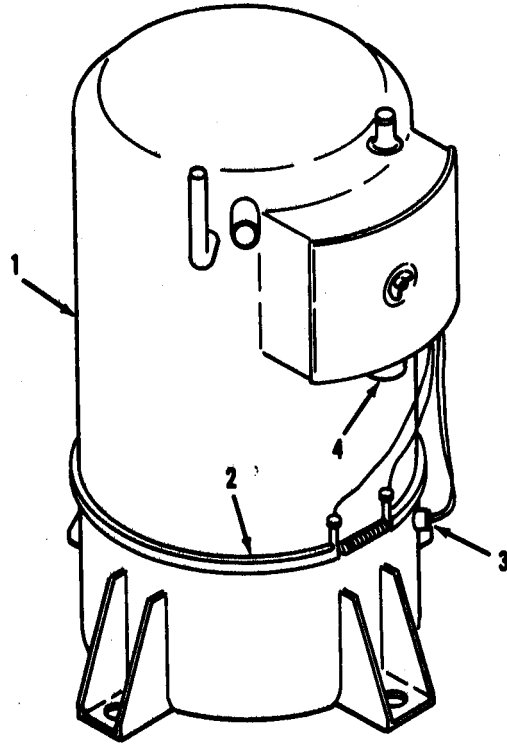


TM5-4120-356-24P/8

Figure 8. Wiring Harness, Power Input, Junction Box, Three Phase

SECTION II

(1)	(2)	(3)	(4)	(5)	(6)	(7)	(8)	
ILLUSTRATION								
(A)	(B)	NATIONAL		PART	DESCRIPTION		QTY	
FIG	ITEM	STOCK		NUMBER		USABLE ON CODE	INC	
NO.	NO.	CODE	NUMBER	FSCM	NUMBER		IN	
							U/M	
							UNIT	
8		MOOOO		97403	13215E9866	.WIRING HARNESS, POWER INPUT JUNCTION BOX THREE PHASE TAKE FROM:	EA	1
8	1	PAOZZ	5935-00-804-5816	96906	MS3102R22-22P	..CONNECTOR, RECEPTACLE	EA	1
8	2	MOOOO		81349	MIL-I-23053 CL I BLACK .375 ID	..INSULATION TUBING HEAT SHRINKABLE, BLACK MAKE FROM .375 ID X .025 NOM WALL THK X .75 LG	FT	V
8	3	PAOZZ	5940-00-143-4794	96906	MS25036-112	..TERMINAL, LUG	EA	4
8	4	MOOZ		81349	M5086/2-10-9	..WIRE, ELECTRICAL	FT	V

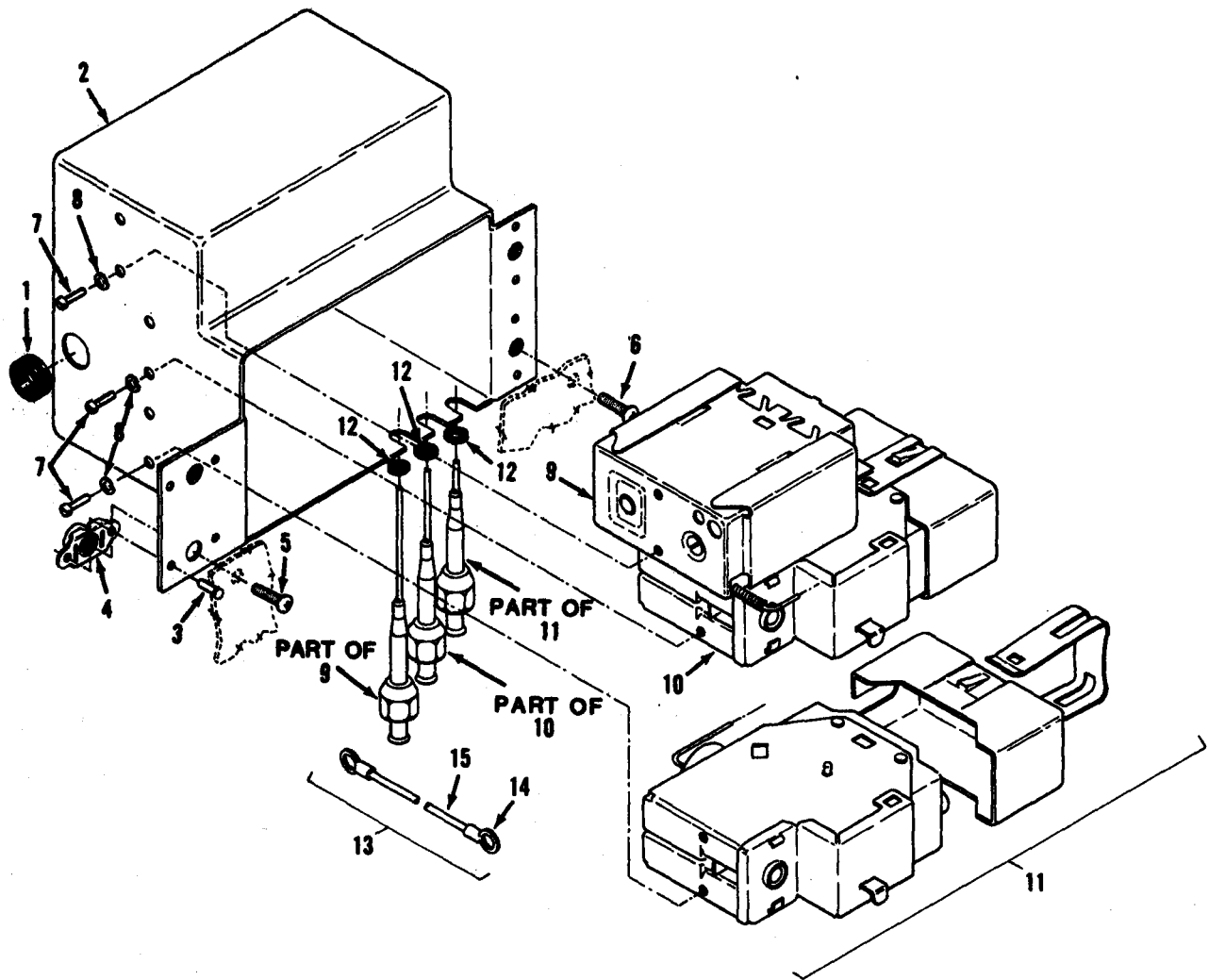


TM5-4120-356-24P/9

Figure 9. Compressor Assembly

SECTION II

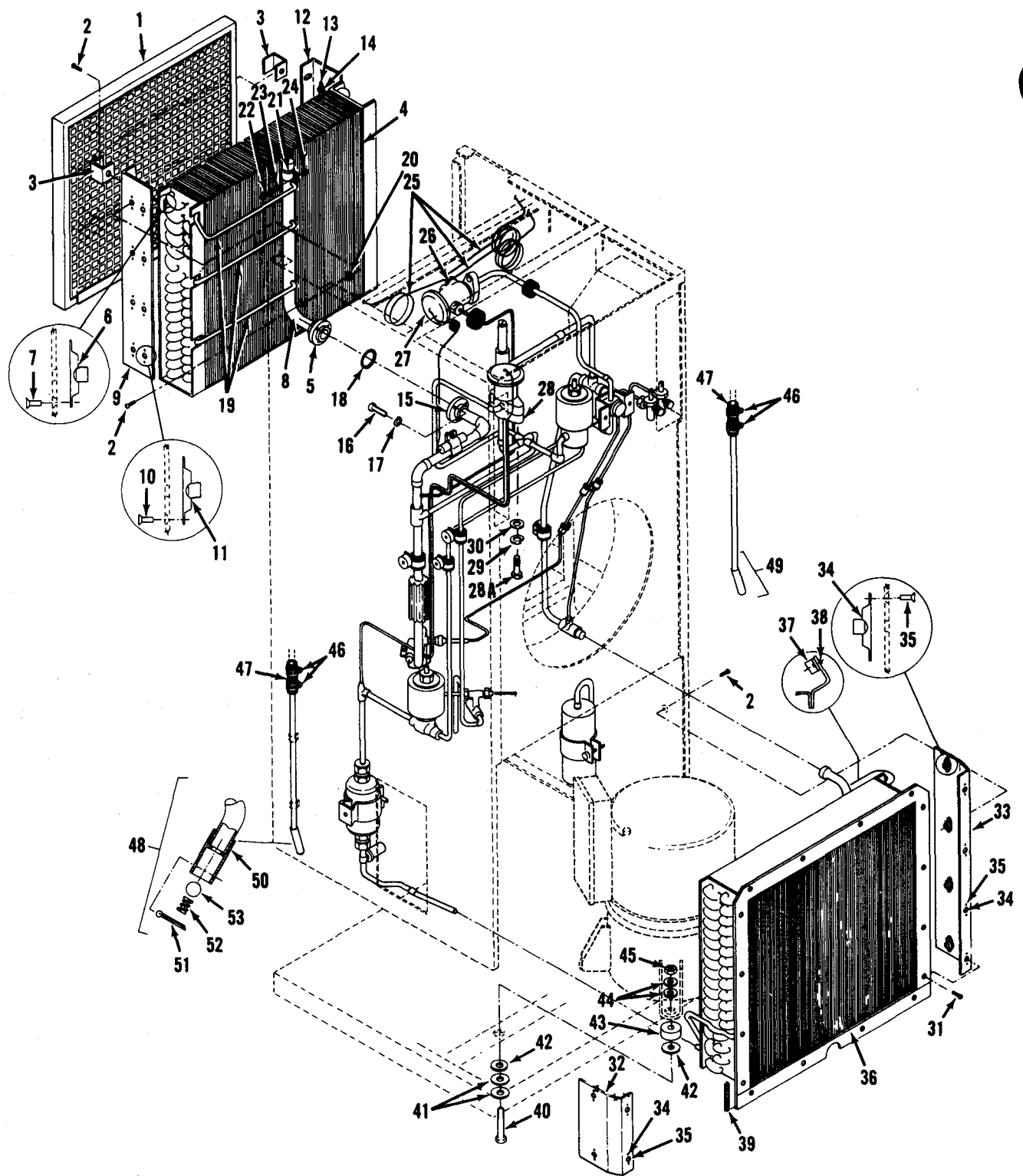
(1)	(2)	(3)	(4)	(5)	(6)	(7)	(8)	
ILLUSTRATION							QTY	
(A)	(B)	NATIONAL			DESCRIPTION		INC	
FIG	ITEM	SMR	STOCK	PART			IN	
NO.	NO.	CODE	NUMBER	FSCM	NUMBER	USABLE ON CODE	U/M	UNIT
					GROUP 03 COMPRESSOR ASSEMBLY			
9	1	PAFFZ	4130-00-139-3378	10855	6A26M179	COMPRESSOR ASSEMBLY	EA	1
9	2	PAOZZ	4130-01-098-0315	10855	HT32AZ223	.HEATER, CRANKCASE	EA	1
9	3	XBOZZ		10855	3RG5163B	.THERMOSTAT, CRANKCASE HEATER	EA	1
9	4	PAOZZ	5935-00-754-5638	96906	MS3102R20-15P	.CONNECTOR, RECEPTACLE	EA	1



TM5-4120-356-24P/10

Figure 10. Pressure Switches

SECTION II								
(1)	(2)	(3)	(4)	(5)	(6)	(7)	(8)	
ILLUSTRATION							QTY	
(A)	(B)	NATIONAL		PART	DESCRIPTION		INC	
FIG	ITEM	SMR	STOCK	NUMBER		USABLE ON CODE	IN	
NO.	NO.	CODE	NUMBER	FSCM	NUMBER		UNIT	
GROUP 04 PRESSURE SWITCHES								
10	1	PAFZZ	5325-00-263-6632	96906	MS35489-6		EA 1	
10	2	XBFZZ		97403	13222E6260		EA 1	
10	3	PAFZZ	5320-00-117-6938	96906	MS20426AD3-4		EA 8	
10	4	PAOZZ	5310-00-660-3395	80205	NAS1031-D06		EA 4	
10	5	PAFZZ	5305-00-059-4553	96906	MS35190-238		EA 2	
10	6	PAFZZ	5305-00-889-3000	96906	MS35206-230		EA 2	
10	7	PAFZZ	5305-00-984-4984	96906	MS35206-227		EA 6	
10	8	PAFZZ	5310-00-045-4007	96906	MS35338-41		EA 6	
10	9	PAFZZ		80439	AP21-1000		EA 1	
10	10	PAFZZ	5930-00-275-7800	50831	P20CA-72		EA 1	
10	11	PAFZZ	5930-00-911-9095	92578	P20BB1		EA 1	
10	12	PAFZZ	5325-00-286-6047	96906	MS35489-1		EA 3	
10	13	MOOOZ		97403	13215E9861		EA 1	
10	14	PAFZZ	5940-00-143-4774	96906	MS25026-153		EA 2	
10	15	MOOOZ		81349	M5086/2-16-9		FT V	

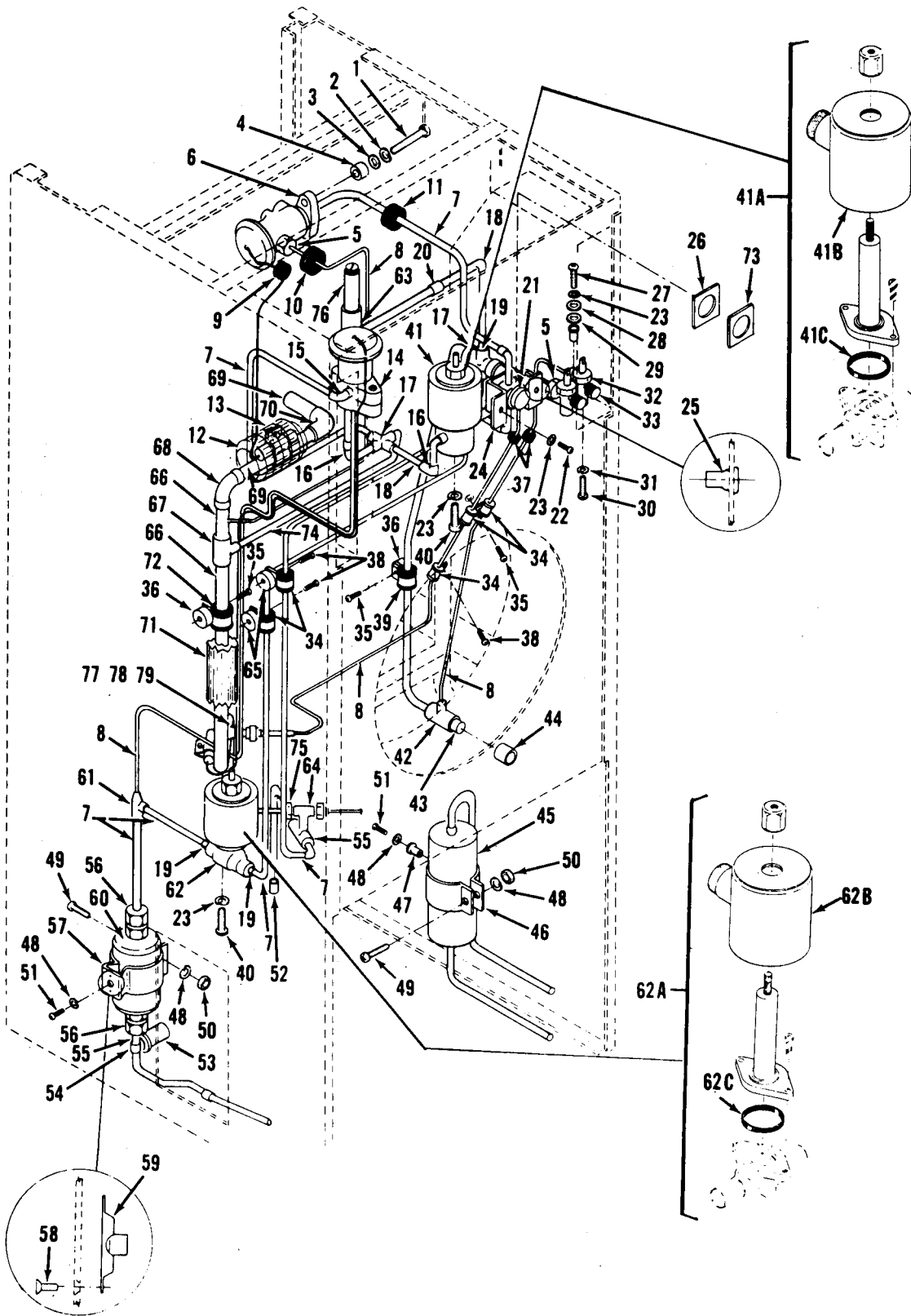


TM5-4120-356-24P/11

Figure 11. Refrigerant Components

SECTION II								
(1)	(2)	(3)	(4)	(5)	(6)	(7)	(8)	
ILLUSTRATION								
(A)	(B)	NATIONAL		PART	DESCRIPTION		QTY	
FIG	ITEM	STOCK		NUMBER			INC	
NO.	NO.	NUMBER	FSCM	NUMBER	USABLE ON CODE		IN	
						U/M	UNIT	
GROUP 05 REFRIGERANT COMPONENTS								
11	1	PAOZZ	4130-01-011-1217	97403	13219E2647		EA 1	
11	2	PAOZZ	5305-00-989-7434	96906	MS35207-263		EA 24	
11	3	XBOZZ		97403	13219E2648		EA 2	
11	4	PBFFZ	4130-00-550-2856	10855	76G2-294		EA 1	
11	5	XBFZZ		97403	13215E9826		EA 1	
11	6	PAFZZ	5310-00-778-2655	96906	MS21059-3		EA 8	
11	7	PAFZZ	5320-00-584-0672	96906	MS20426AD3-6		EA 16	
11	8	MFFFF		81346	ASTM-675 X.750		FT V	
11	9	XBFFF		97403	13215E9827		EA 1	
11	10	PAFZZ	5320-00-117-6947	96906	MS20426AD3-16		EA 16	
11	11	PAFZZ	5310-00-623-5989	80205	NAS1031-A3		EA 8	
11	12	XBFF		97403	13215E9889		EA 1	
11	13	PAFZZ	5320-00-117-6937	96906	MS20426AD3-3		EA 14	
11	14	PAFZZ	5310-00-623-5989	80205	NAS1031-A3		EA 7	
11	15	PAFZZ	4730-00-408-4566	97403	13211E8233		EA 1	
11	16	PAFZZ	5305-00-978-9385	96906	MS16997-62		EA 3	
11	17	PAFZZ	5310-00-582-5965	96906	MS35338-44		EA 3	
11	18	PAFZZ	5330-00-239-4922	97403	13211E8394-1		EA 1	
11	19	MFFFF		81346	ASTM-75 X.375		FT V	
11	20	PAFZZ	5330-00-119-7503	80205	NAS15233F		EA 8	
11	21	PAFZZ	5340-00-106-0552	96906	MS21104D12		EA 1	
11	22	PAFZZ	5305-00-984-6193	96906	MS35206-245		EA 1	
11	23	PAFZZ	5310-00-045-3299	96906	MS35338-42		EA 1	
11	24	PAFZZ	5310-00-934-9757	96906	MS35649-282		EA 1	
11	25	MFFFF		81346	ASTM-B75 X.156OD		FT V	
11	26	PAFZZ		70255	5-2.5-3		EA 1	
11	27	PAFZZ	4820-01-017-4248	70255	TCLE100HW100-6A		EA 1	
11	28	XBFZZ		97403	13211E8376-3		EA 2	
11	28A	PAFZZ	5305-00-801-1290	96906	MS35308-366		EA 2	
11	29	PAFZZ	5310-00-959-4675	96906	MS35340-46		EA 2	
11	30	PAFZZ	5310-00-087-7493	96906	MS27183-13		EA 4	
11	31	PAFZZ	5305-00-957-7811	96906	MS24693-S272		EA 8	
11	32	XBFFF		97403	13215E9887		EA 1	
11	33	XBFFF		97403	13215E9888		EA 1	
11	34	PAFZZ	5310-00-623-5989	80205	NAS1031-A3		EA 16	

SECTION II		(2)	(3)	(4)	(5)	(6)	(7)	(8)
(1)	(1)							
ILLUSTRATION								
(A)	(B)	NATIONAL				DESCRIPTION		QTY
FIG	ITEM	STOCK		PART				INC
NO.	NO.	NUMBER	FSCM	NUMBER	USABLE ON CODE		U/M	IN
								UNIT
11	35	PAFZZ	5320-00-117-6947	96906	MS20426AD3-16	.RIVET,SOLID CSK 100 DEGREE PRECISION HEAD 8/32 DIA X AR LONG	EA	32
11	36	PBFFZ	4130-00-550-2857	97403	13215E9837	COOLING COIL	EA	1
11	37	PAFZZ	5310-00-623-5989	80205	NAS1031-A3	.NUT,SELF LOCK PLATE	EA	1
11	38	PAFZZ	5320-00-117-6939	96906	MS20426AD3-5	.RIVET,SOLID CSK 100 DEGREE PRECISION HEAD 3/32 X 5/16 LONG	EA	2
11	39	MFFFF			ASTM-D-1056 SBE-81346	.STRIP,SEALING MFG FROM ASTM-D-1056 .06 STK X AR LONG	SH	V
11	40	PAFZZ	5306-00-235-4727	97403	13211E8166	BOLT,COMPRESSOR MOUNTING	EA	4
11	41	PAFZZ	5310-00-167-0768	81352	AN970-6	WASHER, FLAT	EA	8
11	42	PAFZZ	5310-00-401-3365	97403	13211E8170	WASHER,SHOULDERED	EA	8
11	43	PAFZZ	3120-00-410-6718	97403	13211E8169	BUSHING,SLEEVE	EA	4
11	44	PAFZZ	5310-00-167-0767	81352	AN970-5	WASHER,FLAT	EA	8
11	45	PAFZZ	5310-00-880-7744	96906	MS51967-5	NUT,PLAIN,HEXAGON	EA	4
11	46	PAOZZ	4730-00-908-3195	96906	MS35842-10	CLAMP,HOSE SURE TYPE E	EA	4
11	47	PAOZZ	4720-00-269-7060	97403	13211E8323	HOSE RUBBER	EA	2
11	48	XBOOO		97403	13219E2682	DRAIN CONNECTION, LEFT SIDE	EA	1
11	49	XBOOO		97403	13219E2681	DRAIN CONNECTION, RIGHT SIDE	EA	1
11	50	XBOZZ		97403	13211E8410	.SEAT,BALL CHECK	EA	1
11	51	PAOZZ	5315-00-234-1856	96906	MS24665-155	.PIN,COTTER	EA	1
11	52	PAOZZ	5360-00-240-6526	97403	13211E8412	.SPRING,HELICAL,COMP	EA	1
11	53	PAOZZ	3110-00-136-2696	97403	13211E8411	.BALL,BEARING	EA	1



TM5-4120-356-24P/12

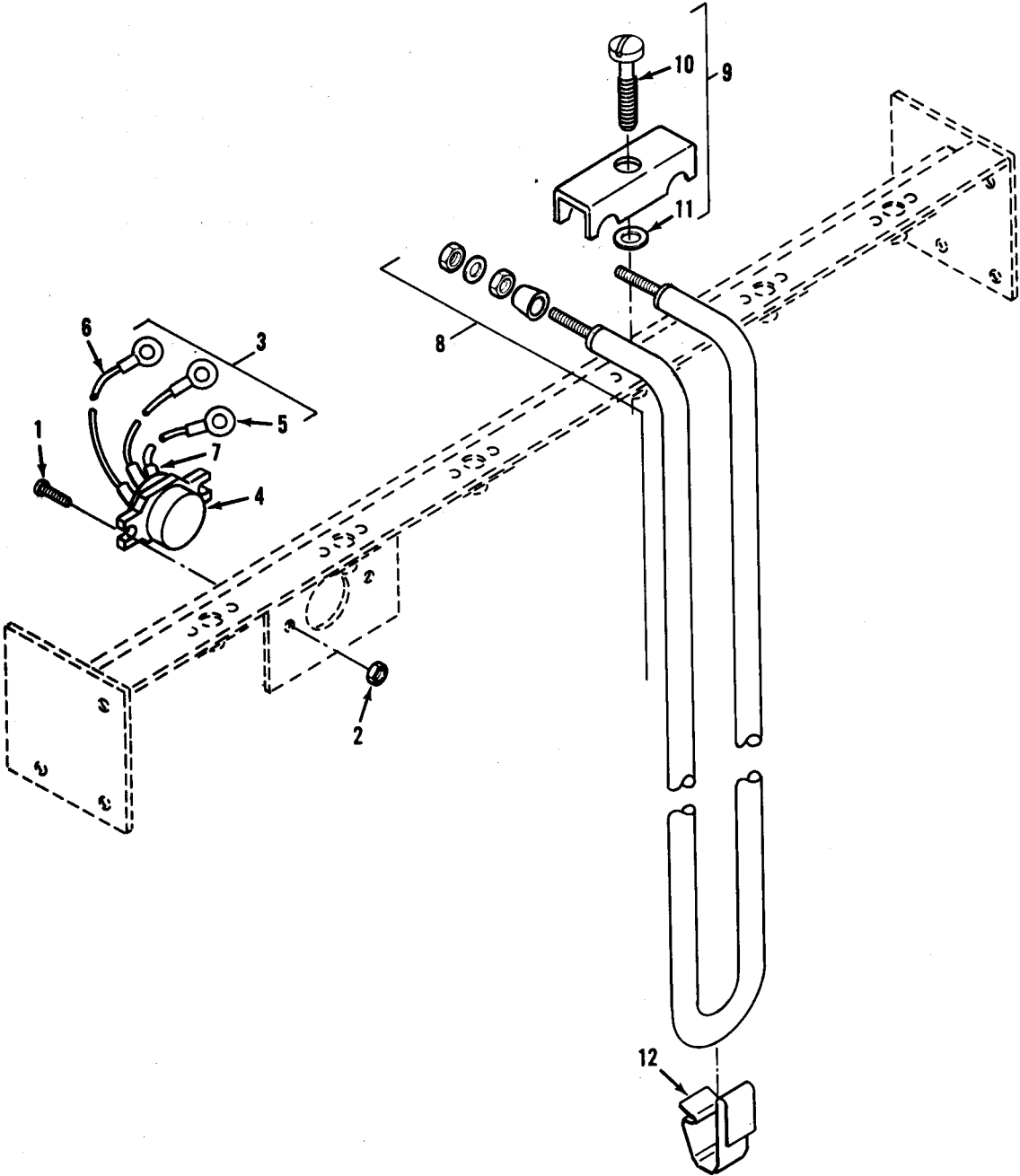
Figure 12. Refrigerant components

SECTION II		(2)	(3)	(4)	(5)	(6)	(7)	(8)	
ILLUSTRATION									
(A)	(B)		NATIONAL		PART	DESCRIPTION		QTY	
FIG	ITEM	SMR	STOCK	FSCM	NUMBER		USABLE ON CODE	INC	
NO.	NO.	CODE	NUMBER					IN	
								U/M	
								UNIT	
12	1	PAFZZ	5305-00-801-1290	96906	MS35308-366	SCREW,CAP,HEXAGON HEAD		EA	4
12	2	PAFZZ	5310-00-959-4675	96906	MS35340-46	WASHER,LOCK		EA	4
12	3	PAFZZ	5310-00-087-7493	96906	MS27183-13	WASHER,FLAT		EA	4
12	4	XBFZZ		97403	13211E8376-3	SPACER,VALVE		EA	4
12	5	PAFZZ	4730-00-189-2737	96906	MS35872-2	NUT,TUBE COUPLING		EA	3
12	6	PAFZZ	4820-01-017-4248	97403	13215E9839	VALVE,EXPANSION		EA	1
12	7	MFFFF		81346	ASTM-B280 X .375	TUBE,COPPER MFG FROM ASTM-B280 .375 X .032 X WALL X AR LONG.		FT	V
12	8	MFFFF		81346	ASTM-B280 X .250	TUBE,COPPER MFG FROM ASTM-B280 .250 X .030 WALL X AR LONG		FT	V
12	9	PAFZZ	5325-00-286-6047	96906	MS35489-1	GROMMET,NONMETALLIC		EA	4
12	10	PAFZZ	5325-00-276-6087	96906	MS35489-8	GROMMET,NONMETALLIC		EA	1
12	11	PAFZZ	5325-01-052-9276	96906	MS35489-11	GROMMET,RUBBER		EA	1
12	12	PAFZZ	7510-00-852-8179	97403	13215E9855-111	TAPE, PRESSURE SENSITIVE		RO	V
12	13	MFFFF		81349	MIL-F-15280 FORM 1 TYPE 2 .75 ID	PLASTIC MATERIAL MAKE FROM MIL-P-15280 FORM 1 TYPE 2 .75 ID X .50 WALL X AR LONG		SH	V
12	14	PAFZZ	4820-01-055-1283	70255	7CL3-4CL-15A	VALVE,EXPANSION		EA	1
12	15	PAFZZ	4730-00-277-7922	97403	13216E6176-2	ELBOW,TUBE		EA	1
12	16	PAFZZ	4730-00-821-3037	97403	13216E6176-3	ELBOW,TUBE		EA	3
12	17	PAFZZ	4730-00-707-6950	41947	WT603A1452	CROSS,TUBE		EA	2
12	18	MFFFF		81346	ASTM-B280 X .500	TUBE,COPPER MFG FROM ASTM-B280 .500 OD X .032 WALL X AR LONG		FT	V
12	19	PAFZZ	4730-00-822-1275	97403	13211E3799-3	REDUCER,TUBE		EA	5
12	20	[AFZZ	4730-00-822-1277	97403	13211E3799-5	REDUCER,TUBE		EA	2
12	21	PAFZZ	4130-00-073-8404	97403	13211E8218	INDICATOR,SIGHT		EA	1
12	22	PAFZZ	5305-00-984-6193	96906	MS35206-245	SCREW,MACHINE HEAD 8/32 UNC-2A X .500 LONG		EA	2
12	23	PAFZZ	5310-00-045-3299	96906	MS35338-42	WASHER,LOCK		EA	5
12	24	XBFF		97403	13211E8245	BRACKET		EA	1
12	25	PAFZZ	5310-00-089-0013	80205	NAS1329S08K75	.NUT,PLAIN,BLIND RIVET		EA	2
12	26	XBFZZ		97403	13211E8242	SPACER		EA	1
12	27	PAFZZ	5305-00-984-6195	96906	MS35206-247	SCREW,MACHINE		EA	1
12	28	PAFZZ	5310-00-765-3197	96906	MS27183-41	WASHER,FLAT		EA	1
12	29	PAFZZ	5310-00-014-5850	96906	MS27183-42	WASHER,FLAT		EA	1
12	30	PAFZZ	5305-00-984-4983	96906	MS35206-226	SCREW,MACHINE		EA	2
12	31	PAFZZ	5310-00-045-4007	96906	MS35338-41	WASHER,LOCK		EA	2
12	32	PAFZZ	4820-01-015-6690	97403	13219E9499-1	VALVE,GLOBE		EA	2
12	33	PAFZZ	4730-01-092-3835	97403	13219E9540	CAP AND CHAIN		EA	2
12	34	PAFZZ	5340-00-106-0549	96906	MS21104D4	CLAMP,LOOP		EA	5
12	35	PAFZZ	5305-00-995-3442	96906	MS35207-268	SCREW,MACHINE		EA	12
12	36	XBFZZ		97403	13211E8376-1	SPACER		EA	9
12	37	PAFZZ	5325-00-174-5315	96906	MS35489-7	GROMMET,NONMETALLIC		EA	2
12	38	PAFZZ	5305-00-995-3441	96906	MS35207-269	SCREW,MACHINE		EA	2
12	39	PAFZZ	5340-00-685-0466	96906	MS21919DH8	CLAMP		EA	3

SECTION II		(2)	(3)	(4)	(5)	(6)	(7)	(8)
ILLUSTRATION								
(A)	(B)		NATIONAL		PART	DESCRIPTION		QTY
FIG	ITEM	SMR	STOCK	FSCM	NUMBER			INC
NO.	NO.	CODE	NUMBER			USABLE ON CODE	U/M	IN
								UNIT
12	40	PAFZZ	5305-00-984-6192	96906	MS35206-244	SCREW,MACHINE	EA	2
12	41	PAFFZ		97403	13214E4224-6	VALVE ASSEMBLY,SOLENCID	EA	1
12	41A	PAFZZ	4810-00-433-0763	93781	CB241-24VDC	.SOLENOID	EA	1
12	41B	PAOZZ	5950-00-242-9749	93781	757230	.COIL,ELECTRICAL	EA	1
12	41C	XBFZZ		93781	P45-11	.GASKET,HOUSING	EA	1
12	42	PAFZZ	4730-00-821-9184	97403	13211E4043-12	TEE,TUBE	EA	1
12	43	MFFFF		81346	ASTM-B280 X .500	TUBE,COPPER MFR FROM ASTM-B280 .500 OS X .032 WALL X AR LONG	FT	V
12	44	PAFZZ	4730-00-822-1277	97403	13211E3799-5	REDUCER,TUBE	EA	1
12	45	XBFZZ		97403	13214E3798-3	RECEIVER	EA	1
12	46	XBFZZ		97403	13220E5619	BRACKET,RECEIVER	EA	1
12	47	PAFZZ	5310-01-017-6519	96906	MS27130S37K	.NUT,BLIND RIVET	EA	2
12	48	PAFZZ	5310-00-582-5965	96906	MS35338-44	WASHER,LOCK	EA	1
12	49	PAFZZ	5305-00-088-8923	96906	MS35207-285	SCREW,MACHINE	EA	2
12	50	PAFZZ	5310-00-043-0520	96906	MS35650-3252	NUT,PLAIN,HEXAGON	EA	2
12	51	PAFZZ	5305-00-993-2461	96906	MS35207-281	SCREW,MACHINE	EA	2
12	52	PAFZZ	4730-00-822-1278	97403	13211E3799-8	REDUCER,TUBE	EA	1
12	53	PAFZZ	4820-00-073-8405	97403	13211E8369	VALVE,SAFETY RELIEF	EA	1
12	54	PAFZZ	4730-00-143-8933	97403	13214E3411-3	TEE,PIPE TO TUBE	EA	2
12	55	MFFFF		81346	ASTM-B280 X .375	TUBE,COPPER MFR FROM ASTM-B280 .375 OD X .032 WALL X AR LONG	FT	V
12	56	PAFZZ	4730-00-189-2739	96906	MS35872-3	NUT,TUBE COUPLING SEAL BONNET.375	EA	2
12	57	XBFF		97403	13211E8406	BRACKET ASSY	EA	2
12	58	PAFZZ	5320-00-005-6296	11815	CCR264SS-3-4	.RIVET,BLIND	EA	2
12	59	PAFZZ	5310-00-771-7359	96906	MS21076-L4	NUT,SELF LOCK PLATE	EA	1
12	60	PAFZZ	4130-00-572-4709	78462	C-C83	DEHYDRATOR, DESICCANT	EA	1
12	61	PAFZZ	4730-00-815-5664	97403	13211E4043-7	TEE,TUBE	EA	1
12	62	PAFZZ		97403	13214E4224-5	VALVE ASSEMBLY, SOLENOID	EA	1
12	62A	PAFZZ	4810-00-433-0763	93781	CB241-24VDC	.SOLENOID	EA	1
12	62B	PAOZZ	5950-00-242-9749	93781	757230	.COIL	EA	1
12	62C	XBFZZ		93781	P45-11	.GASKET,HOUSING	EA	1
12	63	PAFZZ	5340-00-952-7009	96906	MS21315-22	STRAP,RETAINING	EA	1
12	64	PAFZZ	4730-00-289-4202	96906	MS35871-2-2F	TEE,PIPE TO TUBE	EA	1
12	65	XBOZZ		97403	13211E8376-8	SPACER	EA	2
12	66	MFFFF		81346	ASTM-B280 X .625	TUBE,COPPER MFR FROM ASTM-B280 .625 OD X .035 WALL X AR LONG	FT	V
12	67	PAFZZ	4730-00-263-6471	97403	13211E4043-20	TEE,TUBE	EA	1
12	68	PAFZZ	4730-00-640-0311	97403	13215E9864-5	ELBOW,TUBE	EA	1
12	69	MFFFF		81346	ASTM-B280 X .750	TUBE,COPOER MFR FROM ASTM-B280 .750 OD X .042 WALL X AR LONG	FT	V
12	70	PAFZZ	4730-00-254-6424	97403	13216E6190-5	ELBOW,TUBE	EA	1

SECTION II

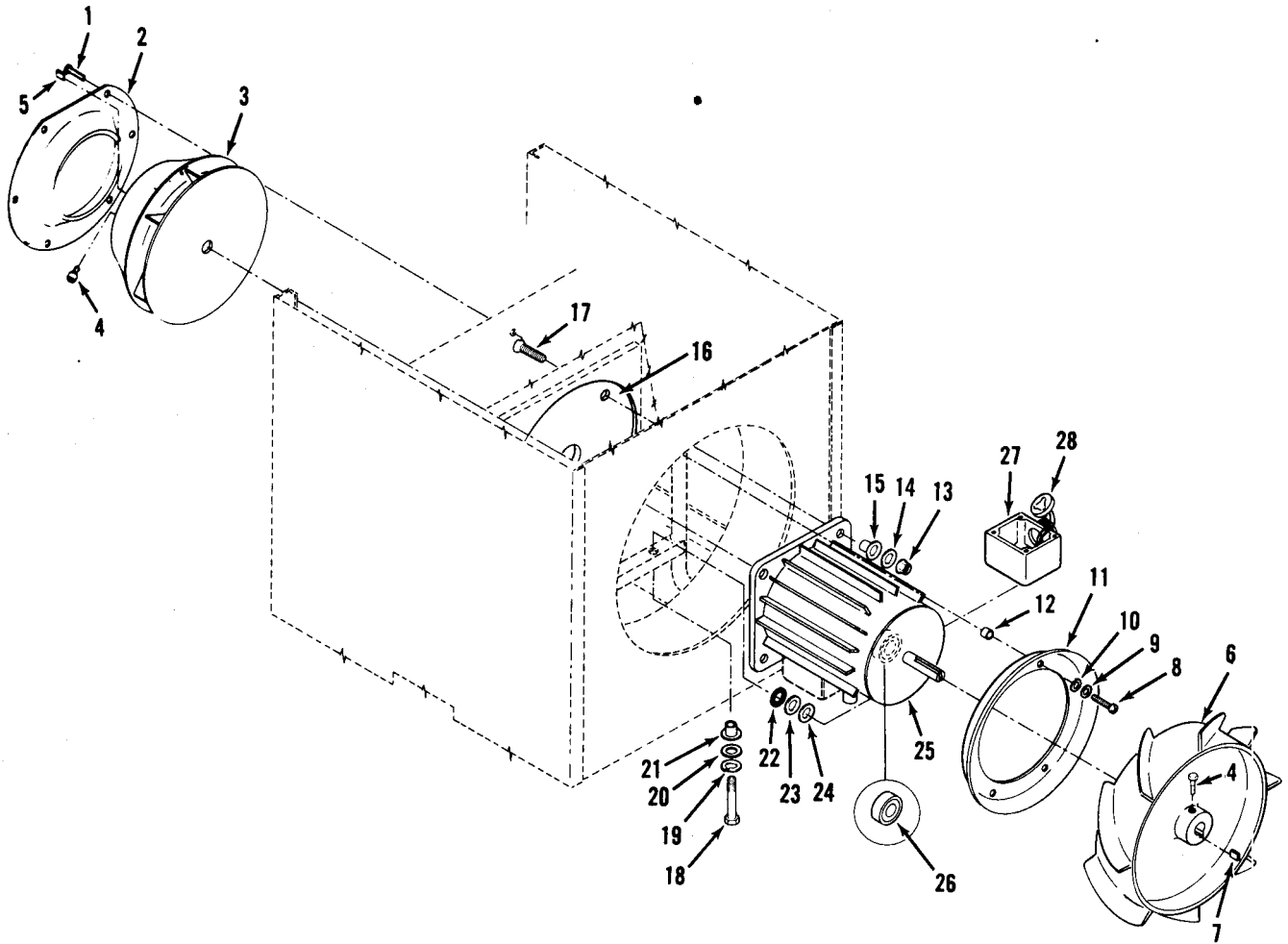
(1)	(2)	(3)	(4)	(5)	(6)	(7)	(8)	
ILLUSTRATION								
(A)	(B)	NATIONAL		PART	DESCRIPTION		QTY	
FIG	ITEM	STOCK		NUMBER		USABLE ON CODE	INC	
NO.	NO.	CODE	NUMBER	FSCM			IN	
							U/M	
							UNIT	
12	71	MFFFF		81349	MIL-F-15280 FORM 1 TY 2 2.62 ID	PLASTIC MATERIAL	FT	V
12	72	XDFZZ	5340-00-106-0551	96906	MS21104D10	CLAMP, LOOP .622 WIDE FUEL AND WEATHER RESISTANT	EA	1
12	73	PAFZZ	5330-00-409-3350	97403	13211E8255	GASKET	EA	1
12	74	PAFZZ	4730-00-445-0594	48061	W-2621	ELBOW, TUBE	EA	1
12	75	PAFZZ	4730-00-202-9200	96906	MS35919-23	REDUCER, TUBE; EXTERNAL FLARE TO FEMALE, SOLDER 1/4 FL. •• ARE TO 3/8 SOLDER	EA	1
12	76	PAFZZ	4820-00-909-3717	97403	13211E3800	VALVE, REGULATING	EA	1
12	77	PAFZZ	4730-00-809-9669	41947	W1717	REDUCER, TUBE 3/8	EA	2
12	78	PAFZZ	4730-00-707-6946	41947	A2220	CROSS, TUBE	EA	1
12	79	PAFZZ	4730-00-822-1274	41947	W1706	REDUCER, TUBE 1/4	EA	1



TM5-4120-356-24P/

Figure 13. Heater Assembly

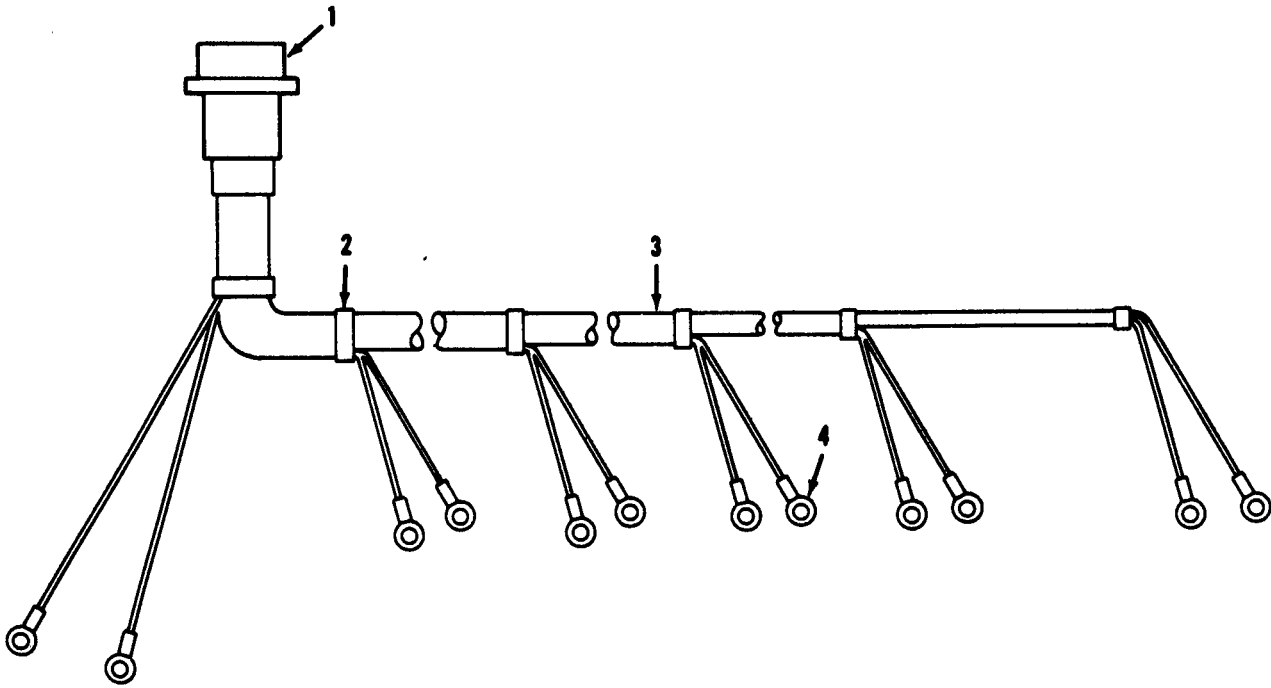
SECTION II		(2)	(3)	(4)	(5)	(6)	(7)	(8)
(1)								
ILLUSTRATION								
(A)	(B)		NATIONAL		PART	DESCRIPTION		QTY
FIG	ITEM	SMR	STOCK	FSCM	NUMBER			INC
NO.	NO.	CODE	NUMBER			USABLE ON CODE	U/M	IN
						GROUP 06 HEATER ASSEMBLY		UNIT
13	1	PAOZZ	5305-00-984-6193	96906	MS35206-245	SCREW,MACHINE	EA	2
13	2	PAOZZ	5310-00-889-2549	96906	MS21045-08	NUT,SELF-LOCKING,HEXAGON	EA	2
13	3	PAOOO	5930-01-054-4128	97403	13215E9884	SWITCH, THERMOSTATIC	EA	1
13	4	PAOZZ	4130-00-106-1972	82647	MWA1256	.THERMOSTAT,HEATER	EA	1
13	5	PAOZZ	5940-00-143-4780	96906	MS25036-108	.TERMINAL,LUG	EA	3
13	6	MOOZZ		81349	M5086/2-16-9	.WIRE,ELECTRICAL	FT	V
13	7	MOOOO		81349	MIL-I-23053 C1 BLACK .125 ID	.INSULATION,TUBING,BLACK, MAKE FROM .125 ID X .020 NOM WALL THK X .75 LG	FT	V
13	8	PAOZZ	4130-00-878-0103	97403	13211E8353-1	HEATING ELEMENT, ELECTRICAL	EA	6
13	9	XBOZZ	5340-01-039-0103	97403	13214E3416	CLAMP,RIM CLENCHING	EA	6
13	10	XDOZZ	5305-00-163-8349	94403	13214E3744V34	.SCREW	EA	6
13	11	PAOZZ	5310-00-880-9344	94222	12-1104-12	.WASHER,LOCK	EA	6
13	12	PAOZZ	4130-00-056-4593	78553	20744-017-495	CLIP	EA	6



TM5-4120-356-24P/14

Figure 14. Fan Motor and Fans

SECTION II									
(1)	(2)	(3)	(4)	(5)	(6)		(7)	(8)	
ILLUSTRATION									
(A)	(B)	NATIONAL		PART	DESCRIPTION			QTY	
FIG	ITEM	STOCK	FSCM	NUMBER		USABLE ON CODE	U/M	INC	
NO.	NO.	NUMBER						IN	
								UNIT	
GROUP 07. FANS AND MOTOR									
14	1	PAOZZ 5305-00-984-6193	96906	MS35206-245	SCREW, MACHINE		EA	6	
14	2	XBOZZ 6105-01-047-3844	97403	13211E8221	RING, INLET, FAN		EA	1	
14	3	PBOZZ 4140-00-550-2994	97403	13215E9868	IMPELLER, FAN		EA	1	
14	4	PAOZZ 5305-00-983-8084	96906	MS16997-60	SCREW, CAP, SOCKET HEAD		EA	4	
14	5	PAOZZ 5315-00-730-4564	96906	MS20066-143	KEY, MACHINE		EA	1	
14	6	PAOZZ 4140-00-929-5561	97403	13226E5892	AXIAL FAN, MULTI-WING		EA	1	
14	7	PAOZZ 5315-00-730-4577	96906	MS20066-147	KEY, MACHINE		EA	1	
14	8	PAOZZ 5305-00-984-6195	96906	MS35206-247	SCREW, MACHINE		EA	4	
14	9	PAOZZ 5310-00-765-3197	96906	MS27183-41	WASHER, FLAT		EA	4	
14	10	PAOZZ 5310-00-045-3299	96906	MS35338-42	WASHER, LOCK		EA	4	
14	11	XBOZZ	97403	13211E3802	BAFFLE		EA	1	
14	12	XBOZZ 5365-01-090-2070	97403	13211E8376-5	SPACER, SLEEVE		EA	4	
14	13	PAOZZ 5310-00-061-7325	96906	MS21045-4	NUT, SELF-LOCKING, HEXAGON		EA	4	
14	14	PAOZZ 5310-00-809-4058	96906	MS27183-10	WASHER, FLAT		EA	4	
14	15	PAOZZ 5365-00-178-1364	97403	13211E8300-1	SPACER, SLEEVE		EA	4	
14	16	PAOZZ 4130-00-550-2855	97403	13211E8356	ISOLATOR, FAN MOTOR		EA	1	
14	17	PAOZZ 5305-00-957-2640	96906	MS35191-294	SCREW, MACHINE		EA	4	
14	18	PAOZZ 5305-00-881-0705	96906	MS51975-17	SCREW, SHOULDER		EA	2	
14	19	PAOZZ 5310-00-959-4675	96906	MS35340-46	WASHER, LOCK		EA	2	
14	20	PAOZZ 5310-00-809-4061	96906	MS27183-15	WASHER, FLAT		EA	2	
14	21	PAOZZ 5365-00-438-6882	97403	13211E8300-2	BRUSHING, RUBBER		EA	2	
14	22	PAOZZ 5310-00-401-1420	97403	13215E9824-1	WASHER, FLAT		EA	2	
14	22	PAOZZ 5310-00-401-3364	97403	13215E9824-2	WASHER, FLAT		EA	2	
14	22	PAOZZ 5310-00-441-8708	97403	13215E9824-3	WASHER, FLAT		EA	2	
14	22	PAOZZ 5310-00-401-1421	97403	13215E9824-4	WASHER, FLAT		EA	2	
14	23	PAOZZ 5310-00-167-0767	81352	AN970-5	WASHER, FLAT		EA	2	
14	24	PAOZZ 5310-00-809-4061	96906	MS27183-15	WASHER, FLAT		EA	2	
14	25	PAOOO	92702	BT4630	MOTOR, ALTERNATING CURRENT: INTERCHANGEABLE WITH P/N 4732-1, MFG CODE 07639 AND P/N 4730-26 MFG CODE 64731 (COMPONENTS ARE NOT INTERCHANGEABLE)		EA	1	
14	25	PAOOO 6105-01-042-5688	07639	4732-1	MOTOR, ALTERNATING CURRENT: INTERCHANGEABLE WITH P/N BT4630, MFG CODE 92702, AND P/N 4730-26 MFG CODE 64731 (COMPONENTS ARE NOT INTERCHANGEABLE)		EA	REF	
14	25	PAOOO	64731	4730-26	MOTOR, ALTERNATING CURRENT: INTERCHANGEABLE WITH P/N BT4630, MFG CODE 07639 (COMPONENTS ARE NOT INTERCHANGEABLE)		EA	REF	
14	26	PAOZZ	92702	47-79	.BEARING (USED ONLY ON P/N BT4630)		EA	2	
14	26	PAOZZ	07639	A161124	.BEARING (USED ONLY ON P/N 4732-1)		EA	2	
14	26	PAOZZ 3110-01-094-2255	64731	01-005248-114	.BEARING (USED ONLY ON P/N 4730-26)		EA	2	
14	27	PAOZZ	92702	MYJ32KO	.PROTECTOR, THERMAL (USED ONLY ON P/N BT4630)		EA	1	
14	27	PAOZZ	07639	A164530	.PROTECTOR, THERMAL (USED ONLY ON P/N 4732-1)		EA	1	
14	27	PAOZZ 6105-01-052-5399	64731	01-008773-052	.PROTECTOR, THERMAL (USED ONLY ON P/N 4730-26)		EA	1	
14	28	PAOZZ	92702	MYJ71WO	.PROTECTOR, THERMAL (USED ONLY ON P/N BT4630)		EA	1	
14	28	PAOZZ	07639	A164684	.PROTECTOR, THERMAL (USED ONLY ON P/N 4732-1)		EA	1	
14	28	PAOZZ 6105-01-052-5400	64731	01-008773-053	.PROTECTOR, THERMAL (USED ONLY ON P/N 4730-26)		EA	1	

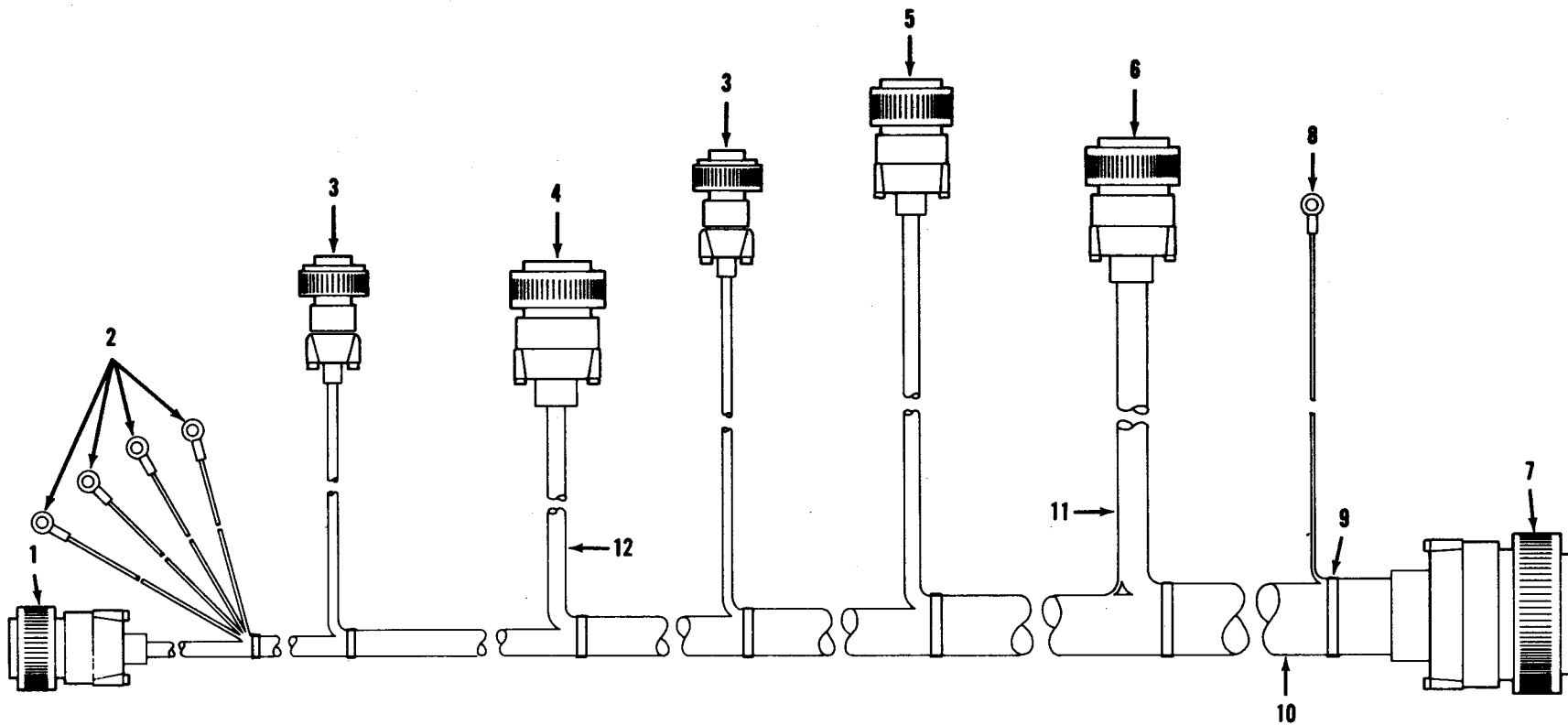


TM 5-4120-356-24P/15

Figure 15. Wiring Harness, Heaters, Three Phase

SECTION II

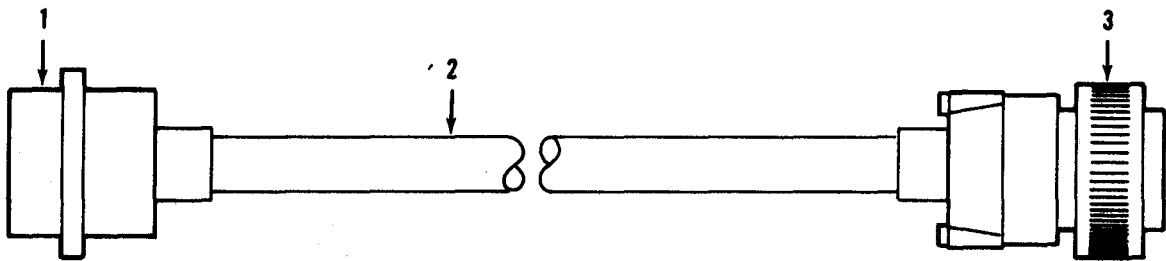
(1)	(2)	(3)	(4)	(5)	(6)	(7)	(8)	
ILLUSTRATION					DESCRIPTION		QTY	
(A)	(B)	NATIONAL		PART			INC	
FIG	ITEM	SMR	STOCK				IN	
NO.	NO.	CODE	NUMBER	FSCM	NUMBER	USABLE ON CODE	U/M	UNIT
GROUP 08 WIRING HARNESSSES								
15		MOOOO		97403	13215E9919	WIRING HARNESS, HEATER THREE PHASE MAKE FROM:	EA	1
15	1	PAOZZ	5935-00-823-0272	96906	MS3100RF14S-6P	.CONNECTOR, RECEPTACLE	EA	1
15	2	PAOZZ	5975-01-013-2742	96906	MS3367-1-9	.STRAP, CABLE	EA	V
15	3	MOOZZ		81349	M5086/2-16-9	.WIRE, ELECTRICAL	FT	V
15	4	PAOZZ	5940-00-143-4780	96906	MS25036-108	.TERMINAL, LUG	EA	12



TM5-4120-356-24P/16

Figure 16. Wiring Harness, Three Phase

SECTION II		(2)	(3)	(4)	(5)	(6)	(7)	(8)	
(1)	ILLUSTRATION								
(A)	(B)	NATIONAL						QTY	
FIG	ITEM	SMR	STOCK	FSCM	PART	DESCRIPTION	USABLE ON CODE	INC	
NO.	NO.	CODE	NUMBER		NUMBER			IN	
							U/M	UNIT	
16		MOOOO		97403	13222E6261	WIRING HARNESS, THREE PHASE MAKE FROM:		EA	1
16	1	PAOZZ	5935-00-721-0488	96906	MS3106R14S6S	.CONNECTOR, PLUG, ELECTRICAL		EA	1
16	2	PAOZZ	5940-00-143-4774	96906	MS25036-153	.TERMINAL, LUG		EA	4
16	3	PAOZZ	5935-00-725-4638	96906	MS3106R12S-3S	.CONNECTOR, PLUG, RECEPTACLE		EA	2
16	4	PAOZZ	5935-00-846-2329	96906	MS3106R20-27S	.CONNECTOR, PLUG RECEPTACLE		EA	1
16	5	PAOZZ	5935-00-816-8646	96906	MS3106R20-15S	.CONNECTOR, PLUG, RECEPTACLE		EA	1
16	6	PAOZZ	5935-00-682-0552	96906	MS3106R28-11S	.CONNECTOR, PLUG, RECEPTACLE		EA	1
16	7	PAOZZ	5935-00-846-5602	96906	MS3106R36-7P	.CONNECTOR, PLUG, ELEC		EA	1
16	8	PAOZZ	5940-00-143-4777	96906	MS25036-157	.TERMINAL, LUG		EA	1
16	9	PAOZZ	5975-01-013-2742	96906	MS3367-1-9	.STRAP, CABLE		EA	V
16	10	MOOOZ		81349	M5086/2-12-9	.WIRE, ELECTRICAL		FT	V
16	11	MOOOZ		81349	M5086/2-16-9	.WIRE, ELECTRICAL		FT	V
16	12	MOOOZ		81349	M5086/2-14-9	.WIRE, ELECTRICAL		FT	V

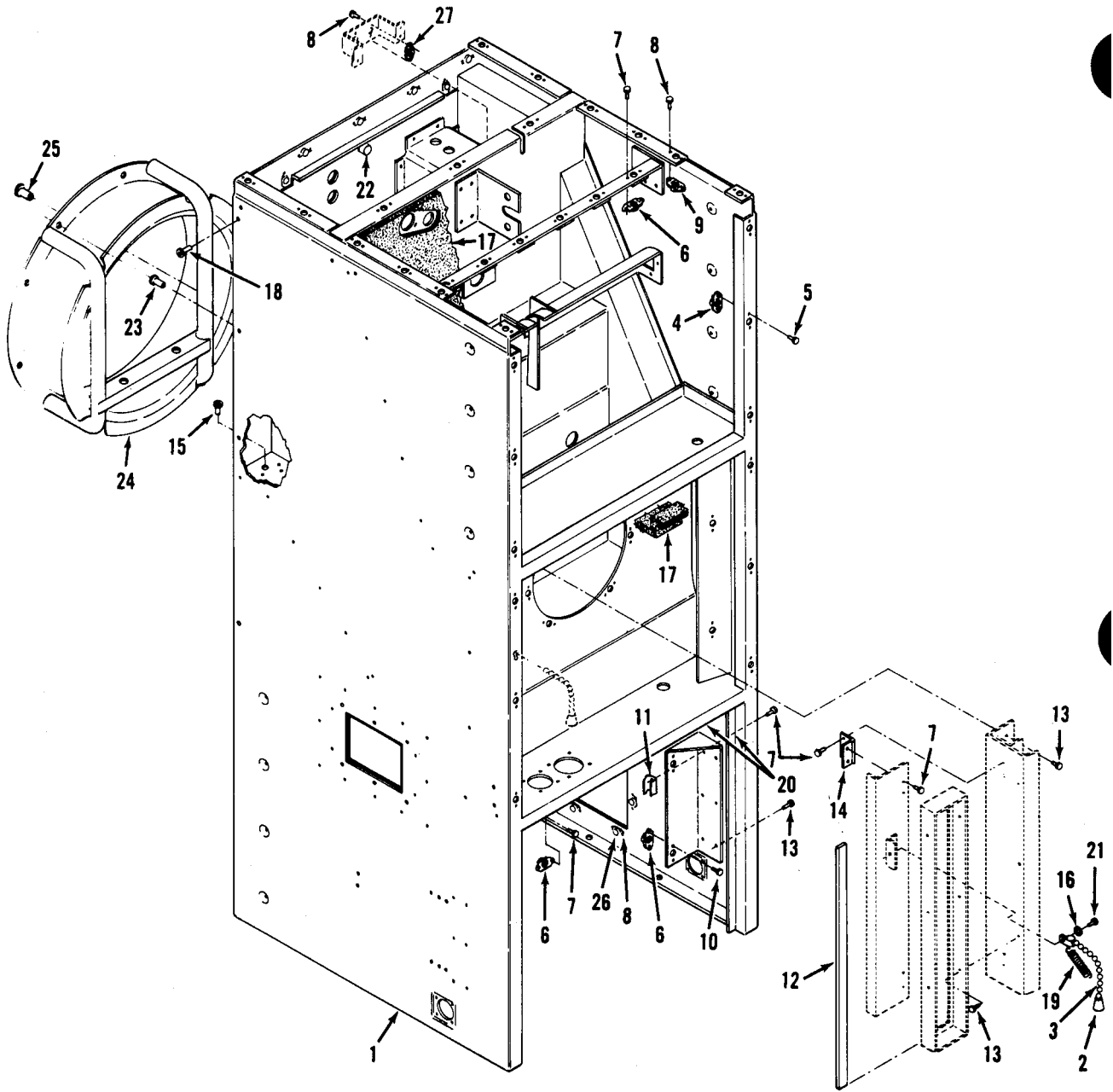


TM5-4120-356-24P/17

Figure 17. Wiring Harness, Power Input, Three Phase

SECTION II

(1)	(2)	(3)	(4)	(5)	(6)	(7)	(8)	
ILLUSTRATION								
(A)	(B)	NATIONAL			DESCRIPTION		QTY	
FIG	ITEM	SMR	STOCK	PART			INC	
NO.	NO.	CODE	NUMBER	FSCM	NUMBER	USABLE ON CODE	IN	
							U/M	
							UNIT	
17		MOOOO		97403	13215E9862	WIRING HARNESS, THREE PHASE, POWER INPUT MAKE FROM:	EA	1
17	1	PAOZZ	5935-00-853-2543	96906	MS3100R22-22P	.CONNECTOR, PLUG, RECEPTACLE	EA	1
17	2	MOOOZ		81349	M5086/2-10-9	.WIRE, ELECTRICAL	FT	V
17	3	PAOZZ	5935-00-846-2328	96906	MS3106R22-22S	.CONNECTOR, PLUG, RECEPTACLE	EA	1



TM5-4120-356-24P/18

Figure 18. Casing Assembly

SECTION II								
(1)	(2)	(3)	(4)	(5)	(6)	(7)	(8)	
ILLUSTRATION								
(A)	(B)	NATIONAL		PART	DESCRIPTION		QTY	
FIG	ITEM	STOCK		NUMBER			INC	
NO.	NO.	SMR		FSCM	USABLE ON CODE		IN	
		CODE	NUMBER				U/M	
							UNIT	
GROUP 09 FRAME AND CASING								
18	1	XBHFH		97403	13215E9825	CASING ASSY	EA	1
18	2	PAOZZ	4130-00-922-2439	97403	13211E8305	.PENDANT WITH SLEEVE	EA	1
18	3	PAFZZ	4130-00-106-5657	97403	13211E8322	.CHAIN ASSEMBLY	EA	1
18	4	PAFZZ	5325-00-067-9222	71286	12R1 1AA	.RECEPTACLE,TURNLOCK	EA	10
18	5	PAFZZ	5320-00-117-6010	96906	MS20426AD2-3	.RIVET, SOLID,1/16 DIAM	EA	32
18	6	PAFZZ	5310-00-089-6304	94222	12-11020-11	.NUT,SHEET SPRING	EA	12
18	7	PAFZZ	5320-00-582-3288	96906	MS20600AD4W1	.RIVET, BLIND,1/8 DIAM	EA	252
18	8	PAFZZ	5320-00-117-6937	96906	MS20426AD3-3	.RIVET,SOLID 3/32 DIAM	EA	130
18	9	PAFZZ	5310-00-623-5991	80205	NAS1031A08	.NUT,SELF LOCK PLATE 8/32 UNC-3B	EA	41
18	10	PAFZZ	5320-00-835-5368	96906	MS20601AD4W8	.RIVET, BLIND,1/8 DIAM	EA	8
18	11	XBFZZ		97403	13211E8346	.CLIP,SPRING	EA	4
18	12	MFFFF		81346	ASTM-D-1056 SBE-42-CF2 .125 STK	.GASKET .125 STK	SH	V
18	13	PAFZZ	5320-00-616-4350	96906	MS20600AD6W1	.RIVET, BLIND,3/16 DIAM	EA	24
18	14	XBFZZ	5340-00-302-1415	97403	13211E8191	.HINGE,BUTT	EA	2
18	15	PAFZZ	5310-01-043-5788	96906	MS27130-S13K	.NUT,BLIND RIVET FLAT HEAD	EA	1
18	16	PAOZZ	5310-00-983-8483	96906	MS27183-5	.WASHER, FLAT	EA	1
18	17	MFFFF		81349	MIL-I-14511X.500	.INSULATION SHEET MAKE FROM MIL-I-14511 X .500 STOCK	SH	V
18	18	PAFZZ	5310-00-143-6203	80205	NAS1329S08KB75	.NUT,BLIND RIVET FLAT HEAD CLOSED END KEYED 8/32 UNC-38 X .010-.075 GRIP RANGE	EA	8
18	19	PAFZZ	5360-00-917-4500	96906	MS24586-C60	.SPRING,HELICAL	EA	1
18	20	PAFZZ	5999-00-461-2602	97403	13218E9879-1	.WIRE MESH,KNITTED	EA	3
18	21	PAFZZ	5320-00-117-6832	96906	MS20470AD4-10	.RIVET,SOLID UNIVERSAL HEAD 1/8 DIA X AR LONG	EA	1
18	22	PAFZZ	5310-01-045-6613	96906	MS27130-S50K	.NUT,PLAIN,BLIND RIVET	EA	1
18	23	PAFZZ	5310-01-036-4687	96906	MS27130-S15K	.NUT,PLAIN,BLIND RIVET HEAD OPEN END KEYED 8/32 UNC-3B X .500 SHANK LG	EA	8
18	24	XDFZZ	4130-00-889-9283	97403	13211E8319	.SUPPORT ASSEMBLY, MOTOR	EA	1
18	25	PAFZZ	5310-01-021-3448	96906	MS27130A14K	.NUT,BLIND RIVET FLAT HEAD OPEN END KEYED 8/32 UNC-3B X .010 TO .075 GRIP RANGE	EA	4
18	26	PAFZZ	5310-00-623-5989	80205	NAS1031-A3	.NUT,SELF LOCK PLATE TWO LUG FLOATING 10/32 UNF-3B	EA	19
18	27	PAFZZ	5310-00-680-4985	80205	NAS1031-A06	.NUT,SELF LOCK PLATE TWO LUG FLOATING 6/32 UNC-3B	EA	2

SECTION II							
(1)	(2)	(3)	(4)	(5)	(6)	(7)	(8)
ILLUSTRATION							QTY
(A)	(B)	NATIONAL		PART	DESCRIPTION		INC
FIG	ITEM	STOCK		NUMBER			IN
NO.	NO.	SMR	FSCM		USABLE ON CODE	U/M	UNIT
NO.	NO.	CODE	NUMBER				
GROUP 10 BULK MATERIALS							
BULK	PAFZZ		81346	ASTM-B280 X .250	TUBE COPPER SMLS .250 OD	RO	
BULK	PAFZZ		81346	ASTM-B280 X .375	TUBE COPPER SMLS .375 OD	RO	
BULK	PAFZZ		81346	ASTM-B280 X .500	TUBE COPPER SMLS .500 OD	RO	
BULK	PAFZZ		81346	ASTM-B280 X .625	TUBE COPPER SMLS .625 OD	RO	
BULK	PAFZZ		81346	ASTM-B280 X .750	TUBE COPPER SMLS .750 OD	RO	
BULK	PAFZZ		81346	ASTM-B75 X .156	TUBE COPPER .156 OD	RO	
BULK	PAFZZ		81346	ASTM-B75 X .375	TUBE COPPER .375 CD	RO	
BULK	PAFZZ		81346	ASTM-B75 X .750	TUBE COPPER .750 CD	RO	
BULK	PAFZZ	9320-00-815-2798	81349	MIL-R-6130	RUBBER STRIP	SH	
BULK	PAOZZ	9320-01-031-9130	81349	MIL-R-6130	RUBBER STRIP	SH	
BULK	PAOZZ	9320-01-048-4563	81205	BMS1-15CLASSSOFT	RUBBER SHEET	SH	
BULK	PAOZZ	5640-01-031-1261	81349	MIL-I-14511 .250	INSULATION .250 THK	SH	
BULK	PAOZZ	5640-00-785-7888	81349	MIL-I-14511 .500	INSULATION .500 THK	SH	
BULK	PAOZZ	5970-00-088-2975	81349	M23053/5-104-9	INSULATION SLEEVING .125 ID	FT	
BULK	PAOZZ	5970-00-740-2972	81349	M23053/5-102-9	INSULATION SLEEVING .063 ID	FT	
BULK	PAOZZ	5970-00-740-2971	81349	M23053/5-107-9	INSULATION SLEEVING .375 ID	FT	
BULK	PAFZZ	5640-00-237-4782	81349	MIL-F-15280 FORM 1 TYPE 2 .75 ID	PLASTIC MATERIAL .5 ID X .50 WALL X AR LONG	SH	
BULK	PAFZZ	5640-00-237-4827	81349	MIL-F-15280 FORM 1 TY 2 2.62 ID	PLASTIC MATERIAL	FT	
BULK	PAOZZ	9320-01-048-2934	81349	MIL-R-6130 TY II GR A .125 STK	RUBBER CELLULAR	FT	
BULK	PAOZZ	9320-01-048-2931	81349	MIL-R-6130 TY II GR A .250 STK	RUBBER CELLULAR	FT	
BULK	PAOZZ	6145-00-003-9527	81349	M5086/1-10-9	WIRE,ELECTRICAL	FT	
BULK	PAOZZ	6145-00-578-7514	81349	M5086/2-12-9	WIRE,ELECTRICAL	FT	
BULK	PAOZZ	6145-00-578-6604	81349	M5086/2-14-9	WIRE,ELECTRICAL	FT	
BULK	PAOZZ	6145-00-578-6605	81349	M5086/2-16-9	WIRE,ELECTRICAL	FT	
BULK	PAFZZ	5999-00-172-8273	12881	07-0501-2054	SHIELDING GASKET	EA	
BULK	PAFZZ		12881	01-0201-1769	WIRE MESH,KNITTED	FT	
BULK	PAFZZ	5999-00-231-3882	12881	01-0201-1766	WIRE MESH,KNITTED	FT	
BULK	PAFZZ	5999-00-465-4800	12881	01-0401-0888	WIRE MESH,KNITTED	FT	

SECTION III. SPECIAL TOOLS LIST (NOT APPLICABLE)

SECTION IV

NATIONAL STOCK NUMBER AND PART NUMBER INDEX

STOCK NUMBER	FIGURE NO.	ITEM NO.	STOCK NUMBER	FIGURE NO.	ITEM NO.
6145-00-003-9527	BULK		5320-00-165-8307	4	23
5320-00-005-6296	12	58	5310-00-167-0767	11	44
5945-00-007-7669	6	27	5310-00-167-0767	14	23
4730-00-007-9399	3	21	5310-00-167-0768	11	41
5310-00-014-5850	6	49	5330-00-170-0127	2	11
5310-00-014-5850	12	29	5355-00-171-2442	6	54
5310-00-043-0520	12	50	5999-00-172-8273	BULK	
5310-00-045-3299	3	15	5325-00-174-5315	12	37
5310-00-045-3299	3	20	5365-00-178-1364	14	15
5310-00-045-3299	11	23	4730-00-189-2737	12	5
5310-00-045-3299	12	23	4730-00-189-2739	12	56
5310-00-045-3299	14	10	4730-00-202-9200	12	75
5310-00-045-4007		8	5999-00-231-3882	BULK	
5310-00-045-4007	6	24	5315-00-234-1856	11	51
5310-00-045-4007	12	31	5306-00-235-4727	11	40
4130-00-056-4593	13	12	5925-00-236-2349	6	26
5305-00-059-4552	6	31	5930-00-236-2351	4	6
5305-00-059-4553	10	5	5640-00-237-4782	BULK	
5310-00-061-7325	14	13	5640-00-237-4827	BULK	
5310-00-061-7326	4	13	5330-00-239-4922	11	18
5310-00-061-7326	6	17	5360-00-240-6526	11	52
5325-00-067-9222	18	4	5950-00-242-9749	12	41B
4130-00-073-8404	12	21	5950-00-242-9749	12	62B
4820-00-073-8405	12	53	4730-00-254-6424	12	70
5975-00-074-2072	5	8	4730-00-263-6471	12	67
5340-00-078-3615	6	56	5325-00-263-6632	10	1
5310-00-080-6004	4	7	5305-00-267-8953	3	29
5310-00-087-7493	11	30	4720-00-269-7060	11	47
5310-00-087-7493	12	3	5930-00-275-7800	10	10
5970-00-088-2975	BULK		5325-00-276-6087	12	10
5305-00-088-8923	12	49	4730-00-277-7922	12	15
5310-00-089-0013	12	25	5940-00-283-5280	5	3
5310-00-089-6304	5	16	5940-00-283-5280	7	4
5310-00-089-6304	18	6	5325-00-286-6047	4	25
5340-00-103-2976	4	26	5325-00-286-6047	10	12
5340-00-106-0549	12	34	5325-00-286-6047	12	9
5340-00-106-0551	12	72	4730-00-289-4202	12	64
5340-00-106-0552	11	21	5340-00-302-1415	18	14
4130-00-106-1972	13	4	4130-00-357-0519	3	1
5961-00-106-5259	6	37	4130-00-357-0520	2	18
4130-00-106-5657	18	3	5310-00-401-1420	14	22
5320-00-117-6010	18	5	5310-00-401-1421	14	22
5320-00-117-6828	1	2	5310-00-401-3364	14	22
5320-00-117-6828	1	4	5310-00-401-3365	11	42
5320-00-117-6832	18	21	4730-00-408-4566	11	15
5320-00-117-6937	2	27	5330-00-409-3350	12	73
5320-00-117-6937	3	24	3120-00-410-6718	11	43
5320-00-117-6937	6	43	5905-00-420-7238	4	4
5320-00-117-6937	11	13	5945-00-430-6933	6	13
5320-00-117-6937	18	8	5940-00-432-2660	7	8
5320-00-117-6938	10	3	4810-00-433-0763	12	41A
5320-00-117-6939	11	38	4810-00-433-0763	12	62A
5320-00-117-6947	11	10	5365-00-438-6882	14	21
5320-00-117-6947	11	35	5310-00-441-8708	14	22
5330-00-119-7503	6	22	4730-00-445-0594	12	74
5330-00-119-7503	11	20	5999-00-461-2602	18	20
3110-00-136-2696	11	53	5999-00-465-4800	BULK	
4130-00-139-3378	9	1	5950-00-493-5583	6	19
5940-00-143-4774	5	5	5310-00-530-9963		
5940-00-143-4774	7	3	5310-00-530-9963	2	16
5940-00-143-4774	10	14	5310-00-530-9963	2	20
5940-00-143-4774	16	2	5310-00-530-9963	2	24
5940-00-143-4774	16	8	5310-00-543-2009	3	30
5940-00-143-4780	5	2	5310-00-543-2410	2	36
5940-00-143-4780	7	5	5310-00-543-2410	2	40
5940-00-143-4780	13	5	5310-00-543-2410	3	34
5940-00-143-4780	15	4	5945-00-549-6348	6	36
5940-00-143-4794	7	6	5310-00-550-1130	6	47
5940-00-143-4794	8	3	4130-00-550-2855	14	16
5310-00-143-6203	2	4	4130-00-550-2856	11	4
5310-00-143-6203	18	18	4130-00-550-2857	11	36
4730-00-143-8933	12	54	4140-00-550-2994	14	3
5940-00-150-4682	7	7	5940-00-557-1629	6	9
5305-00-163-8349	2	31	4130-00-572-4709	12	60
5305-00-163-8349	13	10	6145-00-578-6604	BULK	
9905-00-165-7470	6	20	6145-00-578-6605	BULK	
9905-00-165-7471	3	10	6145-00-578-7514	BULK	
9905-00-165-7472	3	6	5320-00-582-3272	6	6
9905-00-165-7474	3	9	5320-00-582-3288	18	7
			5320-00-582-3305	4	11

TM5-4120-356-24P
SECTION IV
NATIONAL STOCK NUMBER AND PART NUMBER

STOCK NUMBER	FIGURE NO.	ITEM NO.	STOCK NUMBER	FIGURE NO.	ITEM NO.
5310-00-582-5965	11	17	4130-00-878-0103	13	8
5310-00-582-5965	12	48	5310-00-880-7744	11	45
5320-00-584-0672	11	7	5310-00-880-9344	2	30
5320-00-616-4350	18	13	5310-00-880-9344	6	4
5310-00-623-5989	4	24	5310-00-880-9344	13	11
5310-00-623-5989	11	11	5305-00-881-0705	14	18
5310-00-623-5989	11	14	5310-00-889-2544	4	20
5310-00-623-5989	11	34	5310-00-889-2544	6	32
5310-00-623-5989	11	37	5310-00-889-2549	4	3
5310-00-623-5989	18	26	5310-00-889-2549	6	35
5310-00-623-5991	18	9	5310-00-889-2549	13	2
5310-00-627-6128	4	8	5305-00-889-2999	2	37
4730-00-640-0311	12	68	5305-00-889-2999	3	31
5310-00-655-5873	6	44	5305-00-889-3000	10	6
5310-00-655-5886	3	23	5305-00-889-3001	4	19
5310-00-660-3395	10	4	4130-00-889-9283	18	24
5310-00-660-4985	18	27	4730-00-908-3195	11	46
5935-00-682-0552	16	6	4820-00-909-3717	12	76
5930-00-683-1628	4	1	5930-00-911-9095	10	11
5340-00-685-0466	12	39	5355-00-916-2060	4	12
5920-00-688-4085	6	33	5360-00-917-4500	18	19
5330-00-702-6032	3	7	5310-00-917-8592	3	25
4730-00-707-6946	12	78	4130-00-922-2439	18	2
4730-00-707-6950	12	17	5930-00-923-4176	4	2
5935-00-721-0488	16	1	4140-00-929-5561	14	6
5325-00-724-7655	2	19	5310-00-934-9739	2	35
5935-00-725-4638	16	3	5310-00-934-9739	2	39
5315-00-730-4564	14	5	5310-00-934-9739	3	33
5315-00-730-4577	14	7	5310-00-934-9751	4	15
5970-00-740-2971	BULK		5310-00-934-9751	6	58
5970-00-740-2972	BULK		5310-00-934-9757	11	24
5935-00-754-5638	9	4	5325-00-938-5913	2	17
4130-00-764-9206	3	13	5325-00-938-5913	2	25
5310-00-765-3197	2	45	5920-00-939-5442	6	29
5310-00-765-3197	3	19	5310-00-950-1310	6	12
5310-00-765-3197	6	52	5310-00-950-1310	6	50
5310-00-765-3197	6	59	5340-00-952-7009	12	63
5310-00-765-3197	12	28	5325-00-954-3832	3	36
5310-00-765-3197	14	9	5305-00-957-2640	14	17
5310-00-771-7359	12	59	5305-00-957-7811	11	31
5310-00-778-2655	11	6	5310-00-958-5321	3	28
5640-00-785-7888	BULK		5310-00-959-4675	11	29
5305-00-801-1290	11	28A	5310-00-959-4675	12	2
5305-00-801-1290	12	1	5310-00-959-4675	14	19
5310-00-802-8544	4	16	5305-00-978-9385	11	16
5935-00-804-5816	8	1	4130-00-981-6615	2	21
5305-00-808-7834	2	43	5305-00-983-6730	6	11
5310-00-809-4058	14	14	5305-00-983-8084	14	4
5310-00-809-4061	14	20	5310-00-983-8483	18	16
5310-00-809-4061	14	24	5305-00-984-4976	6	38
5310-00-809-8546	4	14	5305-00-984-4982	6	23
4730-00-809-9669	12	77	5305-00-984-4983	12	30
9320-00-815-2798	BULK		5305-00-984-4984	10	7
4730-00-815-5664	12	61	5305-00-984-4988	6	28
5935-00-816-8646	16	5	5305-00-984-6192	4	21
5935-00-818-7448	5	1	5305-00-984-6192	12	40
4730-00-821-3037	12	16	5305-00-984-6193	2	10
4730-00-821-9184	12	42	5305-00-984-6193	2	44
4730-00-822-1274	12	79	5305-00-984-6193	3	2
4730-00-822-1275	12	19	5305-00-984-6193	11	22
4730-00-822-1277	12	20	5305-00-984-6193	12	22
4730-00-822-1277	12	44	5305-00-984-6193	13	1
4730-00-822-1278	12	52	5305-00-984-6193	14	1
5935-00-823-0272	15	1	5305-00-984-6195	3	5
5935-00-824-7883	7	1	5305-00-984-6195	3	14
5330-00-828-3628	4	18	5305-00-984-6195	6	18
5320-00-835-5368	6	15	5305-00-984-6195	12	27
5320-00-835-5368	18	10	5305-00-984-6195	14	8
5330-00-836-4356	6	51	5305-00-984-6196	3	18
5330-00-838-6935	6	53	5305-00-984-7341	3	41
5320-00-845-9501	3	8	5305-00-989-6265	4	27
5935-00-846-2328	11	3	5305-00-989-6265	6	21
5935-00-846-2329	16	4	5305-00-989-7434	11	2
5935-00-846-5602	16	7	5305-00-989-7435	1	6
7510-00-852-8179	12	12	5325-00-990-4249	2	2
5935-00-853-2543	17	1	5305-00-990-6444	6	57
5310-00-853-4488	2	5	5305-00-993-2461	12	51
5940-00-859-4475	5	4	5305-00-995-3441	12	38
5310-00-877-5798	3	40	5305-00-995-3442	12	35
			5305-00-995-3444	4	17

SECTION IV

NATIONAL STOCK NUMBER AND PART NUMBER INDEX

STOCK NUMBER	FIGURE NO.	ITEM NO.	STOCK NUMBER	FIGURE NO.	ITEM NO.
5305-00-995-3444	6	48	6105-01-052-5399	14	27
4130-01-011-1217	11	1	6105-01-052-5400	14	28
5975-01-013-2742	1	11	5325-01-052-9276	12	11
5975-01-013-2742	15	2	3040-01-053-0566	6	55
5975-01-013-2742	16	9	9905-01-053-5362	2	28
4820-01-015-6690	12	32	5330-01-054-1553	6	3
4820-01-017-4248	11	27	5930-01-054-4128	13	3
4820-01-017-4248	12	6	4120-01-054-6534	2	12
5310-01-017-6519	12	47	9905-01-055-0216	3	12
5305-01-018-5599	6	2	4820-01-055-1283	12	14
5305-01-018-5599	6	46	5961-01-055-2188	6	8
5310-01-021-3448	18	25	9905-01-055-6368	3	16
5640-01-031-1261	BULK		9905-01-055-6369	3	11
9320-01-031-9130	BULK		9905-01-055-6370	4	10
5310-01-036-4687	18	23	4120-01-062-0698	4	
5340-01-039-0103	13	9	9905-01-066-9540	6	5
6105-01-042-5688	14	25	5925-01-071-7019	6	25
5310-01-043-5788	18	15	5365-01-090-2070	14	12
5310-01-045-6613	18	22	4730-01-092-3835	12	33
5975-01-045-9683	6	1	3110-01-094-2255	14	26
6105-01-047-3844	14	2	5340-01-094-4587	3	38
4130-01-047-8362	2	22	4130-01-098-0315	9	2
9320-01-048-2931	BULK		4130-01-108-0773	2	29
9320-01-048-2934	BULK		5935-01-118-5714	1	9
9320-01-048-4563	BULK		5935-01-118-5714	1	9
5915-01-051-2774	1	5	5935-01-062-2402	1	10
4130-01-051-7426	2	1	5935-01-172-8574	1	9A

FSCM	PART NUMBER	FIGURE NO.	ITEM NO.	FSCM	PART NUMBER	FIGURE NO.	ITEM NO.
81352	AN970-5	11	44	81349	MIL-P-15280 FORM1 TYPE 2.75 ID	BULK	
81352	AN970-5	14	23	81349	MIL-P-15280 FORM1 TYPE 2.75 ID	12	13
81352	AN970-6	11	41	81349	MIL-F-514	1	1
80349	AP21-1000	10	9	81349	MIL-R-39008-3	4	4
81346	ASTM-B280 X .250	BULK		81349	MIL-R-6130	BULK	
81346	ASTM-B280 X .250	12	8	81349	MIL-R-6130	BULK	
81346	ASTM-B280 X .375	BULK		81349	MIL-R-6130 TY IIGR A .125 STK	BULK	
81346	ASTM-B280 X .375	12	55	81349	MIL-R-6130 TY IIGR A .125 STK	2	15
81346	ASTM-B280 X .375	12	7	81349	MIL-R-6130 TY IIGR A .250 STK	BULK	
81346	ASTM-B280 X .500	BULK		81349	MIL-R-6130 TY IIGR A .250 STK	2	26
81346	ASTM-B280 X .500	12	18	81349	MIL-T-55164/1	6	40
81346	ASTM-B280 X .500	12	43	81349	MIL-T-6130 TY IIGR A .250 STK	2	14
81346	ASTM-B280 X .625	BULK		96906	MS15795-709	4	16
81346	ASTM-B280 X .625	12	66	96906	MS15795-710	3	30
81346	ASTM-B280 X .750	BULK		96906	MS16997-60	14	4
81346	ASTM-B280 X .750	12	69	96906	MS16997-62	11	16
81346	ASTM-B75 X .156	BULK		96906	MS20066-143	14	5
81346	ASTM-B75 X .375	BULK		96906	MS20066-147	14	7
81346	ASTM-B75 X .750	BULK		96906	MS20426AD2-3	18	5
81346	ASTM-B75 X .1560D	11	25	96906	MS20426AD3-16	11	10
81346	ASTM-B75 X .3750D	11	19	96906	MS20426AD3-16	11	35
81346	ASTM-B75 X .750	11	8	96906	MS20426AD3-3	2	27
81346	ASTM-D-1056 SBE-42-CF2 .06 STK	11	39	96906	MS20426AD3-3	3	24
81346	ASTM-D-1056 SBE-42-CF2 .125 STK	6	7	96906	MS20426AD3-3	11	13
81346	ASTM-D-1056 SBE-42-CF2 .125 STK	18	12	96906	MS20426AD3-3	18	8
81346	ASTM-D-1056 SBE-42-CF2 .250 STK	3	4	96906	MS20426AD3-4	10	3
23939	A1444	1	5	96906	MS20426AD3-5	11	38
92758	A19AGF-10	4	2	96906	MS20426AD3-6	11	7
41947	A2220	12	78	96906	MS20426HD3-3	6	43
81205	BMS1-15CLASSSCFT	BULK		96906	MS20470AD3-2	4	23
41625	B43310-1	6	54	96906	MS20470AD4-10	18	21
41625	B4E701X26	6	55	96906	MS20470AD4-6	1	2
78462	C-CB3	12	60	96906	MS20470AD4-6	1	4
11815	CCR264SS-3-4	12	58	96906	MS20600AD4W1	18	7
95970	C1-13490	6	19	96906	MS204600AD4W3	4	11
10855	HT32AZ223	9	2	96906	MS20600AD6W1	18	13
74193	JA3-Z18-3	6	26	96906	MS20600B4W	6	6
71400	KAW5	6	29	96906	MS20600B4W4	3	8
81349	MIL-F-15160/9	6	33	96906	MS20601ADRW8	6	15
81349	MIL-I-14511 .250	BULK		96906	MS20601AD4W8	18	10
81349	MIL-I-14511 .250	2	9	96906	MS21044C3	3	4C
81349	MIL-I-14511 .500	BULK		96906	MS21045-06	4	20
81349	MIL-I-14511X.500	2	8	96906	MS21045-06	6	32
81349	MIL-I-14511X.500	18	17	96906	MS21045-08	4	3
81349	MIL-I-23053 CLIBLACK .125 ID	6	10	96906	MS21045-08	6	35
81349	MIL-I-23053CLIBLACK.125ID	13	7	96906	MS21045-08	13	2
81349	MIL-I-23053 CLIBLACK .375 ID	8	2	96906	MS21045-3	4	13
81349	MIL-I-23053/5 CLI CLR CPT .063ID	4	5	96906	MS21045-3	6	17
81349	MIL-P-15280 FORM1 TY 22.62ID	BULK		96906	MS21045-4	14	13
81349	MIL-P-15280 FORM1 TY 22.62 ID	12	71	96906	MS21059-3	11	6

NATIONAL STOCK NUMBER AND PART NUMBER INDEX

FSCM	PART NUMBER	FIGURE NO.	ITEM NO.	FSCM	PART NUMBER	FIGURE NO.	ITEM NO.
96906	MS21076-L4	12	59	96906	MS35206-219	6	38
96906	MS21104D10	12	72	96906	MS35206-225	6	23
96906	MS21104D12	11	21	96906	MS35206-226	12	30
96906	MS21104D4	12	34	96906	MS35206-227	10	7
96906	MS21105-6	4	26	96906	MS35206-228	6	28
96906	MS21315-22	12	63	96906	MS35206-230	10	6
96906	MS21322-33	6	56	96906	MS35206-231	4	19
96906	MS21919DH8	12	39	96906	MS35206-244	4	21
96906	MS24192-01	6	36	96906	MS35206-244	12	40
96906	MS24523-22	4	1	96906	MS35206-245	2	10
96906	MS24586-C60	18	19	96906	MS35206-245	2	44
96906	MS24665-155	11	51	96906	MS35206-245	3	2
96906	MS24693-S272	11	31	96906	MS35206-245	11	22
96906	MS24693-S6	2	43	96906	MS35206-245	12	22
96906	MS25036-106	5	3	96906	MS35206-245	13	1
96906	MS25036-106	7	4	96906	MS35206-245	14	1
96906	MS25036-108	5	2	96906	MS35206-247	3	5
96906	MS25036-108	7	5	96906	MS35206-247	3	14
96906	MS25036-108	13	5	96906	MS35206-247	6	18
96906	MS25036-112	7	6	96906	MS35206-247	12	27
96906	MS25036-112	8	3	96906	MS35206-247	14	8
96906	MS25036-149	6	9	96906	MS35206-248	3	18
96906	MS25036-153	5	5	96906	MS35207-261	6	57
96906	MS25036-153	7	3	96906	MS35207-262	4	27
96906	MS25036-153	10	14	96906	MS35207-262	6	21
96906	MS25036-153	16	2	96906	MS35207-263	11	2
96906	MS25036-157	16	8	96906	MS35207-264	1	6
96906	MS25036-108	15	4	96906	MS35207-266	4	17
96906	MS27130-S13K	18	15	96906	MS35207-266	6	48
96906	MS27130-S15K	18	23	96906	MS35207-268	12	35
96906	MS27130-S26K	3	28	96906	MS35207-269	12	38
96906	MS27130-S50K	18	22	96906	MS35207-281	12	51
96906	MS27130A14K	18	25	96906	MS35207-285	12	49
96906	MS27130S14	3	25	96906	MS35308-366	11	28A
96906	MS27130S37K	12	47	96906	MS35308-366	12	1
96906	MS27183-10	14	14	96906	MS35333-40	6	47
96906	MS27183-13	11	30	96906	MS35335-35	4	8
96906	MS27183-13	12	3	96906	MS35338-40	2	36
96906	MS27183-14	4	7	96906	MS35338-40	2	40
96906	MS27183-15	14	20	96906	MS35338-40	3	34
96906	MS27183-15	14	24	96906	MS35338-41	8	8
96906	MS27183-4	6	12	96906	MS35338-41	6	24
96906	MS27183-4	6	50	96906	MS35338-41	12	31
96906	MS27183-41	2	45	96906	MS35338-42	3	15
96906	MS27183-41	3	19	96906	MS35338-42	3	20
96906	MS27183-41	6	52	96906	MS35338-42	11	23
96906	MS27183-41	6	59	96906	MS35338-42	12	23
96906	MS27183-41	12	28	96906	MS35338-42	14	10
96906	MS27183-41	14	9	96906	MS35338-44	11	17
96906	MS27183-42	6	49	96906	MS35338-44	12	48
96906	MS27183-42	12	29	96906	MS35340-46	11	29
96906	MS27183-5	18	16	96906	MS35340-46	12	2
96906	MS27183-8	4	14	96906	MS35340-46	14	19
96906	MS3100R14S-6P	15	1	96906	MS35489-1	4	25
96906	MS3100R22-22P	17	1	96906	MS35489-1	10	12
96906	MS3102R20-15P	9	4	96906	MS35489-1	12	9
96906	MS3102R22-22P	8	1	96906	MS35489-11	12	11
96906	MS3102428-11P	5	1	96906	MS35489-6	10	1
96906	MS3102R36-7S	7	1	96906	MS35489-7	12	37
96906	MS3106R12S-3S	16	3	96906	MS35489-8	12	10
96906	MS3106R14S6S	16	1	96906	MS35649-242	2	35
96906	MS3106R20-15S	16	5	96906	MS35649-242	2	39
96906	MS3106R20-27S	16	4	96906	MS35649-242	3	33
96906	MS3106R22-22S	17	3	96906	MS35649-282	11	24
96906	MS3106R28-11S	16	6	96906	MS35650-302	4	15
96906	MS3106R36-7P	16	7	96906	MS35650-302	6	58
96906	MS3367-1-9	1	11	96906	MS35650-3252	12	50
96906	MS3367-1-9	5	8	96906	MS35792-1	3	38
96906	MS3367-1-9	7	2	96906	MS35842-10	11	46
96906	MS3367-1-9	15	2	96906	MS35871-2-2F	12	64
96906	MS3367-1-9	16	9	96906	MS35872-2	12	5
96906	MS3456W-22-22P	1	10	96906	MS35872-3	12	56
96906	MS3456W22-22S	1	9	96906	MS35919-23	12	75
96906	MS35190-237	6	31	96906	MS51007-10	4	18
96906	MS35190-238	10	5	96906	MS51007-13	6	53
96906	MS35191-273	3	41	96906	MS51007-8	6	51
96906	MS35191-294	14	17	96906	MS51967-5	11	45
96906	MS35206-217	2	37	96906	MS51975-17	14	18
96906	MS35206-217	3	31	96906	MS90727-5	3	29
96906	MS35206-218	6	11	96906	MS91528-2P4B	4	12

NATIONAL STOCK NUMBER AND PART NUMBER INDEX

FSCM	PART NUMBER	FIGURE NO.	ITEM NO.	FSCM	PART NUMBER	FIGURE NO.	ITEM NO.
82647	MWA1256	13	4	97403	13211E3800	12	76
81349	M23053/5-102-9	BULK		97403	13211E3802	14	11
81349	M23053/5-104/9	BULK		97403	13211E4043-12	12	42
81349	MS3053/5-107-9	BULK		97403	13211E4043-20	12	67
81496	M5086/1-10-9	BULK		97403	13211E4043-7	12	61
81349	M5086/1-10-9	1	12	97403	13211E8166	11	40
81349	M5086/2-10-9	8	4	97403	13211E8169	11	43
81349	M5086/2-10-9	17	2	97403	13211E8170	11	42
81349	M5086/2-12-9	BULK		97403	13211E8177	3	26
81349	M5086/2/12-9	7	9	97403	13211E8178	3	21
81349	M5086/2-12-9	16	10	97403	13211E8183	3	13
81349	M5086/2-14-9	BULK		97403	13211E8191	18	14
81349	M5086/2-14-9	5	7	97403	13211E8210	2	23
81349	M5086/2-14-9	7	11	97403	13211E8215	3	9
81349	M5086/2-14-9	16	12	97403	13211E8216	3	12
81349	M5086/2-16-9	BULK		97403	13211E8218	12	21
81349	M5086/2-16-9	5	6	97403	13211E8221	14	2
81349	M5086/2-16-9	7	10	97403	13211E8233	11	15
81349	M5086/2-16-9	10	15	97403	13211E8242	12	26
81349	M5086/2-16-9	13	6	97403	13211E8245	12	24
81349	M5086/2-16-9	15	3	97403	13211E8255	12	73
81349	M5086/2-16-9	16	11	97403	13211E8300-1	14	15
91348	M85049/52-1-22W	1	9A	97403	13211E8300-2	14	21
80205	NAS1031-A06	18	27	97403	13211E8305	18	2
80205	NAS1031-A3	4	24	97403	13211E8319	18	24
80205	NAS1031-A3	11	11	97403	13211E8322	18	3
80205	NAS1031-A3	11	14	97403	13211E8323	11	47
80205	NAS1031-A3	11	34	97403	13211E8337	6	4
80205	NAS1031-A3	11	37	97403	13211E8346	18	11
80205	NAS1031-A3	18	26	97403	13211E8438	14	6
80205	NAS1031-D06	10	4	97403	13211E8353-1	13	8
80205	NAS1031A04	3	23	97403	13211E8356	14	16
80205	NAS1031A08	18	9	97403	13211E8369	12	53
80205	NAS1032A04	6	44	97403	13211E8376-1	12	36
80205	NAS1329S06K875	2	5	97403	13211E8376-3	11	28
80205	NAS1329S08K875	2	4	97403	13211E8376-3	12	4
80205	NAS1329S08K875	18	18	97403	13211E8376-5	14	12
80205	NAS1329S08K75	12	25	97403	13211E8376-8	12	65
80205	NAS1523C08F	2	11	97403	13211E8394-1	11	18
80205	NAS1523C3F	6	22	97403	13211E8406	12	57
80205	NAS1523C3F	11	20	97403	13211E8410	11	50
80205	NAS1523C4F	6	3	97403	13211E8411	11	53
77342	PM4030	6	13	97403	13211E8412	11	52
92578	P20BB1	10	11	97403	13213E0636	6	39
50831	P20DA-72	10	10	97403	13214E3411-3	12	54
93781	P45-11	12	41C	97403	13214E3416	13	9
93781	P45-11	12	62C	97403	13214E3471-2	2	41
58849	SSC329	6	37	97403	13214E3471-5	2	38
70255	TCLE100HW100-6A	11	27	97403	13214E3471-5	2	42
48061	W-2621	12	74	97403	13214E3471-5	3	32
41947	WT603A1452	12	17	97403	13214E3647-2	2	2
41947	W1706	12	79	97403	13214E3685-2	6	20
41947	W1717	12	77	97403	13214E744V34	13	10
93781	OB241-24VDC	12	41A	97403	13214E3744V34	2	31
93781	OB241-24VDC	12	62A	97403	13214E3798-3	12	45
74193	006-10245	6	25	97403	13214E3811	6	30
64731	01-005248-114	14	26	97403	13214E4041-13	6	45
64731	01-008773-052	14	27	97403	13214E4224-5	12	62
64731	01-008773-053	14	28	97403	13214E4224-6	12	41
12881	01-0201-1766	BULK		97403	13215E9823	2	18
12881	01-0201-1769	BULK		97403	13215E9824-1	14	22
12881	01-0401-0888	BULK		97403	13215E9824-2	14	22
12881	07-0501-2054	BULK		97403	13215E9824-3	14	22
94222	12-11-204-12	6	2	97403	13215E9824-4	14	22
94222	12-11-204-12	6	46	97403	13215E9825	18	1
94222	12-11014-12	2	30	97403	13215E9826	11	5
94222	12-11020-11	5	16	97403	13215E9827	11	9
94222	12-11020-11	18	6	97403	13215E9832	3	39
94222	12-1104-12	13	11	97403	13215E9837	11	36
71286	12R11AA	18	4	97403	13215E9839	12	6
71286	12S-21-1AA	2	25	97403	13215E9844	3	11
71286	12S1-14-1AA	3	36	97403	13215E9847	3	6
71286	12S1-21-1AA	2	17	97403	13215E9852	3	7
71286	12S1-9-1AA	2	19	97403	13215E9853	5	
00736	124020	2	21	57403	13215E9854	2	22
97403	13211E3784	6	34	97403	13215E9855-1	1	13
97403	13211E3799-3	12	19	97403	13215E9855-111	12	12
97403	13211E3799-3	12	20	97403	13215E9857	2	12
97403	13211E3799-5	12	44	97403	13215E9858	3	1
97403	13211E3799-8	12	52	97403	13215E9861	10	13
				97403	13215E9862	17	

NATIONAL STOCK NUMBER AND PART NUMBER INDEX

FSCM	PART NUMBER	FIGURE NO.	ITEM NO.	FSCM	PART NUMBER	FIGURE NO.	ITEM NO.
97403	13215E9863	3	3	97403	13218E9879-2	2	32
97403	13215E9864-5	12	68	97403	13218E9879-2	2	33
97403	13215E9865	3	22	97403	13218E9879-2	2	34
97403	13215E9866	8		97403	13218E9997-1	2	6
97403	13215E9867	3	17	97403	13218E9997-1	3	27
97403	13215E9868	14	3	97403	13219E2647	11	1
97403	13215E9873	2	29	97403	13219E2648	11	3
97403	13215E9878-1	1	3	97403	13219E2681	11	49
97403	13215E9881	6	8	97403	13219E2682	11	48
97403	13215E9884	13	3	97403	13219E9499-1	12	32
97403	13215E9887	11	32	97403	13219E9540	12	33
97403	13215E9888	11	33	97403	13220E5615-1	6	60
97403	13215E9889	11	12	97403	13220E5616	6	62
97403	13215E9892	2	3	97403	13220E5617	3	16
97403	13215E9893	6	1	97403	13220E5618	1	7
97403	13215E9917	3	10	97403	13220E5619	12	46
97403	13215E9919	15		97403	13222E6260	10	2
97403	13216E6176-2	12	15	97403	13222E6261	16	
97403	13216E6176-3	12	16	02289	1600S590-3	6	27
97403	13216E6190-5	12	70	78553	20744-017-495	13	12
97403	13217E2341	6	5	90611	2267A1	4	6
97403	13217E2342	1	8	10855	3RG5163B	9	3
97403	13217E2343	3	35	19085	41532	5	4
97403	13217E2344	2	28	80639	4732-1	14	25
97403	13217E2346	2	1	70255	5-2.5-3	11	26
97403	13217E2366-1	6		71286	5S3-1		
97403	13217E2367	6	14	71286	5S3-1	2	16
97403	13217E2368	6	42	71286	5S3-1	2	20
97403	13217E6817	6	61	71286	5S3-1	2	24
97403	13217E6853	2	13	10855	6A26M179	9	1
97403	13217E9879	7		00779	60537-1	7	7
97403	13218E8492-1	4		00779	61198-1	7	8
97403	13218E8493	4	9	70255	7CL3-4CL-15A	12	14
97403	13218E8494	4	22	93781	757230	12	41B
97403	13218E8495	4	10	93781	757230	12	62B
97403	13218E9878-3	2	7	10855	76G2-294	11	4
97403	13218E9879-1	18	20				

By Order of the Secretary of the Army:

Official:

E. C. MEYER
General, United States Army
Chief of Staff

ROBERT M. JOYCE
Brigadier General, United States Army
The Adjutant General

DISTRIBUTION:

To be distributed in accordance with DA Form 12-25C, organizational Maintenance Requirements for Environmental Equipment Air Conditioners, 18,000 BTU, Compact.

RECOMMENDED CHANGES TO EQUIPMENT TECHNICAL PUBLICATIONS



THEN... JOT DOWN THE DOPE ABOUT IT ON THIS FORM, CAREFULLY TEAR IT OUT, FOLD IT AND DROP IT IN THE MAIL!

SOMETHING WRONG WITH THIS PUBLICATION?

FROM: (PRINT YOUR UNIT'S COMPLETE ADDRESS)

PFC JOHN DOE
COA, 3d ENGINEER BN
FT. LEONARD WOOD, MO 63108

DATE SENT

PUBLICATION NUMBER
TM 5-4120-356-24P

PUBLICATION DATE
25 Sep 81

PUBLICATION TITLE Air Conditioner,
Vertical Compact, 18,000 BTU/HR

BE EXACT... PIN-POINT WHERE IT IS

PAGE NO.	PARA-GRAPH	FIGURE NO.	TABLE NO.
----------	------------	------------	-----------

6

2-1
a

B1

4-3

125 line 20

IN THIS SPACE TELL WHAT IS WRONG AND WHAT SHOULD BE DONE ABOUT IT:

In line 6 of paragraph 2-1a the manual states the engine has 6 cylinders. The engine on my set only has 4 cylinders. Change the manual to show 4 cylinders.

Callout 16 on figure 4-3 is pointing at a bolt. In key to figure 4-3, item 16 is called a shim - Please correct one or the other.

I ordered a gasket, item 19 on figure B-16 by NSN 2 910-00-762-3001. I got a gasket but it doesn't fit. Supply says I got what I ordered, so the NSN is wrong. Please give me a good NSN

PRINTED NAME, GRADE OR TITLE, AND TELEPHONE NUMBER

JOHN DOE, PFC (268) 317-7111

SIGN HERE

JOHN DOE

DA FORM 2028-2
1 JUL 79

PREVIOUS EDITIONS ARE OBSOLETE.
DRSTS-M Overprint 1, 1 Nov 80

P.S.--IF YOUR OUTFIT WANTS TO KNOW ABOUT YOUR RECOMMENDATION MAKE A CARBON COPY OF THIS AND GIVE IT TO YOUR HEADQUARTERS.

TEAR ALONG PERFORATED LINE

RECOMMENDED CHANGES TO EQUIPMENT TECHNICAL PUBLICATIONS

SOMETHING WRONG WITH THIS PUBLICATION?



THEN... JOT DOWN THE DOPE ABOUT IT ON THIS FORM. CAREFULLY TEAR IT OUT, FOLD IT AND DROP IT IN THE MAIL!

FROM: (PRINT YOUR UNIT'S COMPLETE ADDRESS)

DATE SENT

PUBLICATION NUMBER
TM 5-4120-356-24P

PUBLICATION DATE
25 Sep 81

PUBLICATION TITLE Air Conditioner,
Vertical Compact, 18,000 BTU/HR

BE EXACT... PIN-POINT WHERE IT IS

PAGE NO.	PARA-GRAPH	FIGURE NO.	TABLE NO.

IN THIS SPACE TELL WHAT IS WRONG AND WHAT SHOULD BE DONE ABOUT IT:

[Large blank area for writing recommendations and corrections]

TEAR ALONG PERFORATED LINE

PRINTED NAME, GRADE OR TITLE, AND TELEPHONE NUMBER

SIGN HERE

DA FORM 1 JUL 79 2028-2

PREVIOUS EDITIONS ARE OBSOLETE.
DRSTS-M Overprint 2, 1 Nov 80.

P.S.--IF YOUR OUTFIT WANTS TO KNOW ABOUT YOUR RECOMMENDATION MAKE A CARBON COPY OF THIS AND GIVE IT TO YOUR HEADQUARTERS.

The Metric System and Equivalents

Linear Measure

1 centimeter = 10 millimeters = .39 inch
 1 decimeter = 10 centimeters = 3.94 inches
 1 meter = 10 decimeters = 39.37 inches
 1 dekameter = 10 meters = 32.8 feet
 1 hectometer = 10 dekameters = 328.08 feet
 1 kilometer = 10 hectometers = 3,280.8 feet

Weights

1 centigram = 10 milligrams = .15 grain
 1 decigram = 10 centigrams = 1.54 grains
 1 gram = 10 decigrams = .035 ounce
 1 dekagram = 10 grams = .35 ounce
 1 hectogram = 10 dekagrams = 3.52 ounces
 1 kilogram = 10 hectograms = 2.2 pounds
 1 quintal = 100 kilograms = 220.46 pounds
 1 metric ton = 10 quintals = 1.1 short tons

Liquid Measure

1 centiliter = 10 milliliters = .34 fl. ounce
 1 deciliter = 10 centiliters = 3.38 fl. ounces
 1 liter = 10 deciliters = 33.81 fl. ounces
 1 dekaliter = 10 liters = 2.64 gallons
 1 hectoliter = 10 dekaliters = 26.42 gallons
 1 kiloliter = 10 hectoliters = 264.18 gallons

Square Measure

1 sq. centimeter = 100 sq. millimeters = .155 sq. inch
 1 sq. decimeter = 100 sq. centimeters = 15.5 sq. inches
 1 sq. meter (centare) = 100 sq. decimeters = 10.76 sq. feet
 1 sq. dekameter (are) = 100 sq. meters = 1,076.4 sq. feet
 1 sq. hectometer (hectare) = 100 sq. dekameters = 2.47 acres
 1 sq. kilometer = 100 sq. hectometers = .386 sq. mile

Cubic Measure

1 cu. centimeter = 1000 cu. millimeters = .06 cu. inch
 1 cu. decimeter = 1000 cu. centimeters = 61.02 cu. inches
 1 cu. meter = 1000 cu. decimeters = 35.31 cu. feet

Approximate Conversion Factors

<i>To change</i>	<i>To</i>	<i>Multiply by</i>	<i>To change</i>	<i>To</i>	<i>Multiply by</i>
inches	centimeters	2.540	ounce-inches	newton-meters	.007062
feet	meters	.305	centimeters	inches	.394
yards	meters	.914	meters	feet	3.280
miles	kilometers	1.609	meters	yards	1.094
square inches	square centimeters	6.451	kilometers	miles	.621
square feet	square meters	.093	square centimeters	square inches	.155
square yards	square meters	.836	square meters	square feet	10.764
square miles	square kilometers	2.590	square meters	square yards	1.196
acres	square hectometers	.405	square kilometers	square miles	.386
cubic feet	cubic meters	.028	square hectometers	acres	2.471
cubic yards	cubic meters	.765	cubic meters	cubic feet	35.315
fluid ounces	milliliters	29.573	cubic meters	cubic yards	1.308
pints	liters	.473	milliliters	fluid ounces	.034
quarts	liters	.946	liters	pints	2.113
gallons	liters	3.785	liters	quarts	1.057
ounces	grams	28.349	liters	gallons	.264
pounds	kilograms	.454	grams	ounces	.035
short tons	metric tons	.907	kilograms	pounds	2.205
pound-feet	newton-meters	1.365	metric tons	short tons	1.102
pound-inches	newton-meters	.11375			

Temperature (Exact)

°F	Fahrenheit temperature	5/9 (after subtracting 32)	Celsius temperature	°C
----	------------------------	----------------------------	---------------------	----

PIN: 049784-002